



PEGASUS®

M700

M722 : Double Chainstitch
machines

M732 : Safety StitCh machines

M752 : Overedgers

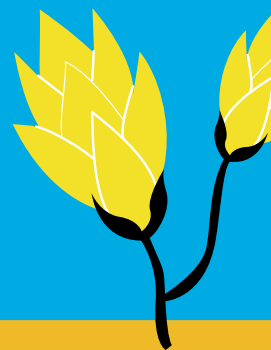


Global Standard Quality for the New

Pegasus offers all you will ever need for next-generation

In the new millennium, we can expect increasingly diversified fashion trends. Aiming to provide the most dependable solutions to meet these trends, Pegasus proudly introduces its brand new sewing machine line — the M700 Series.

With unmatched overall performance qualities, the M700 Series helps both your factory and your operators to boost efficiency and enjoy ease of operation today and in the years ahead.



Real Strengths of New Global Standard M700 Series

Point 1

A working speed of 7,000 rpm is achieved.

M700 Series can hold a working max. speed of 7,000 rpm ! This is because design ideas, such as the specially worked needle bar minimize heat generation, vibration and noise. M700 Series confidently provides the productivity that the factory needs.



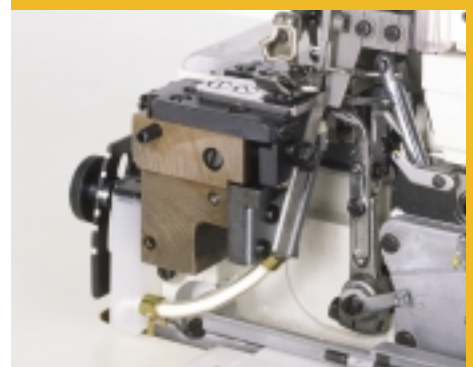
Point 2

All subclasses equipped with upper and lower needle/thread cooler devices(HR) that protect the fabrics and threads against heat.

Heat is generated on the needle due to friction when the needle penetrates the fabric at high speeds. This causes thread breakage and/or stitch skipping.

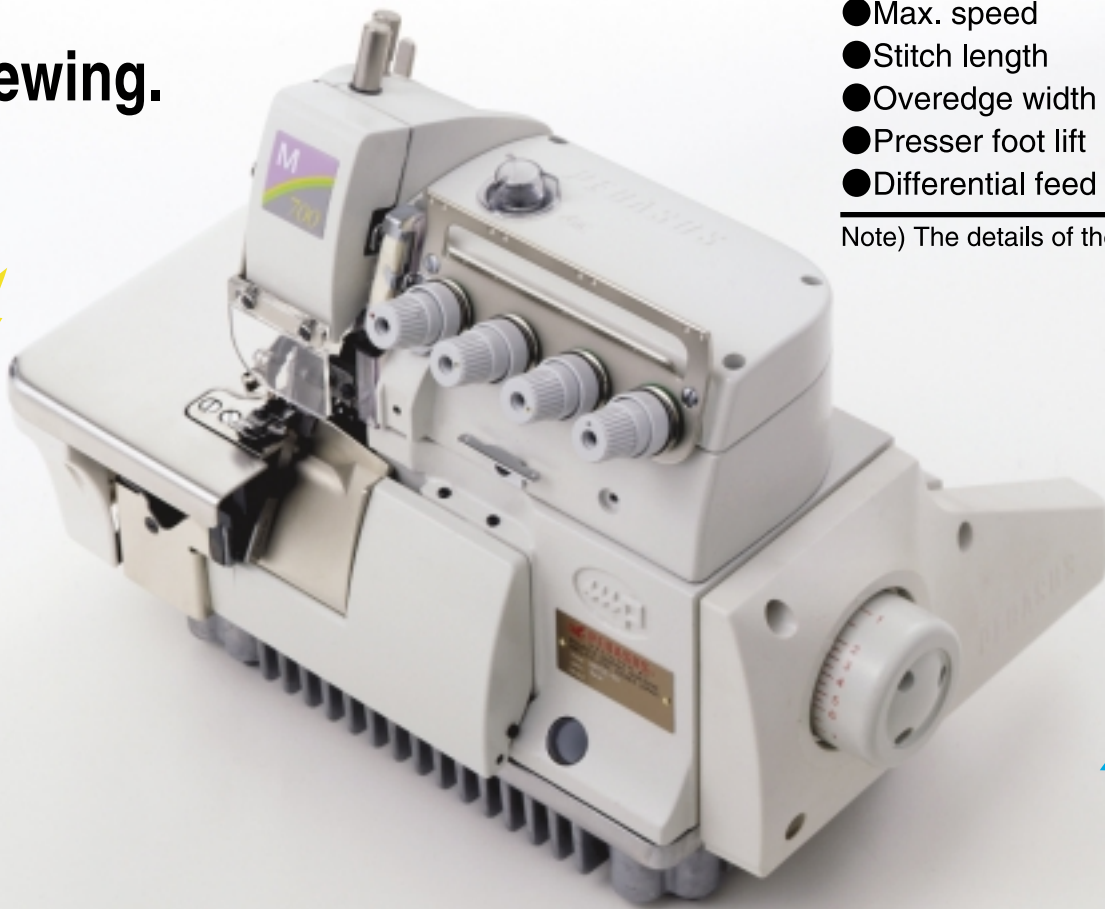
M700 Series is equipped with HR device (needle/thread cooler) that always prevents heat generation on the point of the needle, allowing the thread to move smoothly and producing the stitches uniformly.

Only Pegasus' sewing machines of this class are equipped with the HR device.



Millennium

sewing.



M700 Specifications in common

● Max. speed	7,000 rpm
● Stitch length	0.5mm - 5.3mm
● Overedge width	1.5mm - 6mm
● Presser foot lift	Up to 7mm
● Differential feed ratio	1 : 0.6 - 1 : 2.8

Note) The details of the specs. vary by subclass.

Point 3 Produces well-balanced stitches without loss of characteristics of knit fabrics.

Pegasus' unique knowhow backed by years of expertise as a leading manufacturer of chainstitch machines achieves well-balanced stitches.

Point 4 Simplified threading

You can thread the machine almost horizontally from the right to the left.



Other Features

■ Pushbutton type stitch length adjustment

Easy to adjust stitch length according to sewn products



■ Cloth plate combined with the side cover that can be simultaneously opened

When adjusting differential feed ratio, threading, cleaning, etc., you can open both side cover and cloth plate in a simple operation.



■ Easy-to-handle presser bar with a lever

All you have to do is move the lever down by hand. You can effortlessly handle the presser bar that fixes the presser arm.



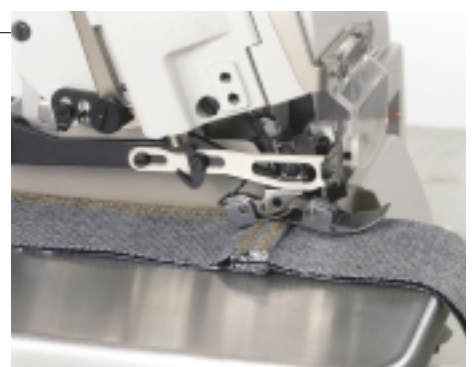
■ Lever type differential feed adjustment

Easy-to-adjust differential feed ratio with no tools according to characteristics of the fabric.



■ Caterpillar foot for M732-86

Suitable for sewing cross seam sections on extra heavy weight fabrics.



■ **Presser foot for M752-13
for attaching tape**

Suitable for joining shoulders on T-shirts.



■ **Movable needle guards that can
receive the needles as required**

Reduces wear in the point of the lower looper.



■ **More proper overlap of the upper
and lower knives**

Reduces wear in the knives.



■ **Low decibel design**

Reducing noise and vibration improves work environment.

■ **Oil sight window
for checking oil level**

You can always check to see the proper level of oil from the outside.



■ **Oil circulation checking window**

You can always check to see if oil is properly circulated obtaining safety.



M700 Devices

■ Thread chain cutter (KS/KH)

Device that cuts the thread chain and disposes of it through vacuum suction.

Eliminates for the need for cutting the thread chain by hand, such as using scissors.

Two types are available.

Vertical type vacuum chain cutter : KS

Flat type vacuum chain cutter : KH



■ Tape/Thread chain cutter (TK)

Switch operated device that cuts the tape and/or thread chain.

Pressing the switch brings the knife down to cut the tape and/or thread chain.

Two types of switches are available.

Electric type of finger switch

Pneumatic type of knee switch



■ Backlatching device (BT)

Device that backlatches the thread chain by sewing it back into the seams on the fabric at the start of sewing.

Eliminates the need for a bartacker and the operator, reducing time and dramatically increasing efficiency.



■ Elastic/Elastic lace feeder with metering device (MD)

Uniformly feeds out elastic and/or elastic tape according to the machine speed, achieving neatly finished seams and increasing quality.

The feeding amount can be adjusted by the dial.





M700 Series Subclasses

Double chainstitch machines : M722



seam	Type of machine	Model	No. of needles	No. of threads	Machine speed(rpm)
	Binding tape				
1	1-needle machine for binding tape on linings of coats, pocket pouches	M722-02x100	1	2	6,000
2	2-needle machine for binding tape on linings of coats, pocket pouches	M722-02x250	2	4	6,000
	Binding tape while shirring				
3	Binding tape while shirring on neck openings of blouses and similar garments	M722-04x100	1	2	6,000



Safety stitch machines : M732

seam	Type of machine	Model	No. of needles	No. of threads	Machine speed(rpm)
	Plain seaming light to medium weight fabrics				
4	Plain seaming light weight fabrics, such as dress shirts	M732-36	2	5	6,500
4	Plain seaming medium weight fabrics, such as casual shirts	M732-38	2	5	6,500
4	Plain seaming garments that need wide overedging, such as cotton pants	M732-70	2	5	6,500
	Shirring				
5	Shirring medium weight fabrics, such as night wear, aprons	M732-48	2	5	5,500
	Shirring while piping				
6	Shirring while piping medium weight fabrics, such as pillow, cushion	M732-48P2	2	5	5,000
	Plain seaming extra heavy weight fabrics				
4	Plain seaming extra heavy weight fabrics, such as jeans	M732-86	2	5	5,500
	3-needle versatile machines				
4 7 9 10	Versatile machine for 1-needle, 2-needle overedging, safety stitching	M732-355	3	6	6,000



Overedgers : M752

seam	Type of machine	Model	No. of needles	No. of threads	Machine speed(rpm)
	1-needle blindstitch hemming				
8	Blindstitch hemming T-shirts	M752-01	1	3	7,000
	Plain seaming light to medium weight fabrics				
9	1-needle plain seaming light to medium weight fabrics, such as T-shirts, polo shirts	M752-17	1	3	7,000
10	2-needle plain seaming, attaching tape and joining shoulders on light to medium weight fabrics, such as T-shirts, polo shirts	M752-13	2	4	6,500
	Turn-down hemming				
11	Turn-down hemming handkerchiefs, scarves	M752-16S2	1	3	6,500
	Plain seaming extra heavy weight fabrics				
10	Plain seaming extra heavy weight fabrics, such as bulky sweaters	M752-23B	2	4	6,000
	Attaching elastic				
12	1-needle attaching elastic on swimsuits, fitness clothing	M752-54A	1	3	5,000
13	2-needle attaching elastic on swimsuits, fitness clothing	M752-55A	2	4	5,000
	Backlatching				
14	1-needle backlatching	M752-180/BT187	1	3	7,000
15	2-needle backlatching	M752-181/BT188	2	4	6,500



PEGASUS®

PEGASUS SEWING MACHINE MFG.CO.,LTD.
 5-7-2, Sagisu, Fukushima-ku, Osaka 553-0002, Japan
 Phone: 81-6-6458-4739 Telefax: 81-6-6454-8785
<http://www.pegasus.co.jp>

※The specification and/or appearances of the equipment described in this catalog is subject to change because of modification without previous notice.

