

AMF Reece

Special Sewing Machines for Applications on Trousers



World Headquarters

Phone:
Fax:
E-mail:

Prostejov, Czech Republic

+420 582 309 275
+420 582 360 606
marketing@amfreece.com

Southwest Asia & Middle East

Phone:
Fax:
E-mail:

Istanbul, Turkey

+90 212 465 0707
+90 212 465 0711
amfreeceturkey@superonline.com

Europe, Africa & Americas

Phone:
Fax:
E-mail:

Prostejov, Czech Republic

+420 582 309 275
+420 582 360 608
amfreece@amfreece.cz

Southeast Asia & Oceania

Phone:
Fax:
E-mail:

Kowloon, Hong Kong

+852 2787 2273
+852 2787 5642
amfreece@netvigator.com



Serging Unit for Trousers and Skirts

The TS-1600 is a serging unit for trousers and skirts without knee lining and small parts. The preseams of hem, fly curve and seat curve can be serged manually while side seams and in-seams are sewn fully automatically with consistent and accurate seam width. The high speed of the unit allows fast and overlapping working method without manual interference of the operator. Touch screen graphical display provides ease of use and quick operator training.



Sewing Speed
8.500 spm

TS-1600 without knee lining

Features

- Pegasus 3-thread EX 5204 Type Overlock Sewing Head
- PLC Control System with Touch Screen Display
- Height Adjustable Edge Guide for Different Material Thicknesses
- Automatic Chain Cutting with Waste Removal
- Thread Monitor
- Cycle Sewing for Sequential Working of Front and Back Garment Panels
- Automatic Stacking



Standard Accessories

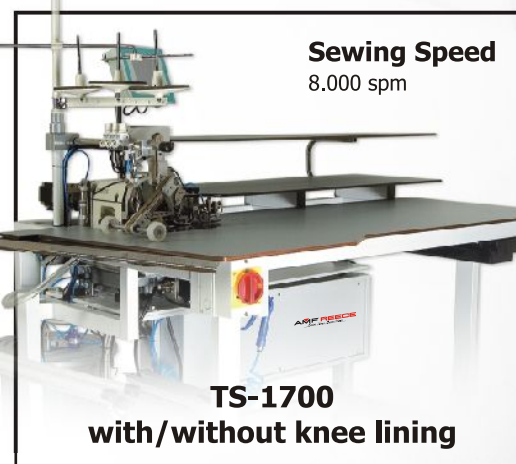
- Fabric Holder
- Push Type Stacker

Optional Accessories

- Advanced Stacker

Production Data per 8 hour day

- 1100 front or back panels
- 1100 front or back panels + 2 preseams
- 950 front or back panels + 3 preseams



Sewing Speed
8.000 spm

TS-1700 with/without knee lining

In addition to the applications on the TS-1600, the TS-1700 can be used for trousers and skirts with knee lining.

Features

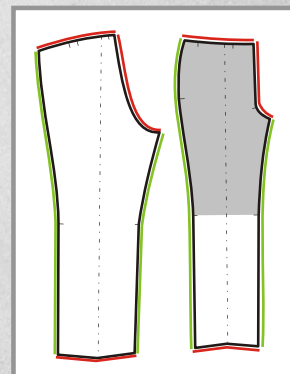
- Pegasus 3-thread EXT 5204 Type Overlock Sewing Head with Top & Bottom Differential Feeding
- Step Motor Controlled Differential Feeding for Optimum Fullness Insertion in Lining Area

Standard Accessories

- Advanced Stacker
- Automatic Fullness Controlled by Step Motors
- Fabric Puller Controlled by Step Motor

Production Data per 8 hour day

- 750 front panels with knee lining
- 1000 back panels
- 900 front and back panels + 2 preseams



TS-1600/ TS-1700 Specifications

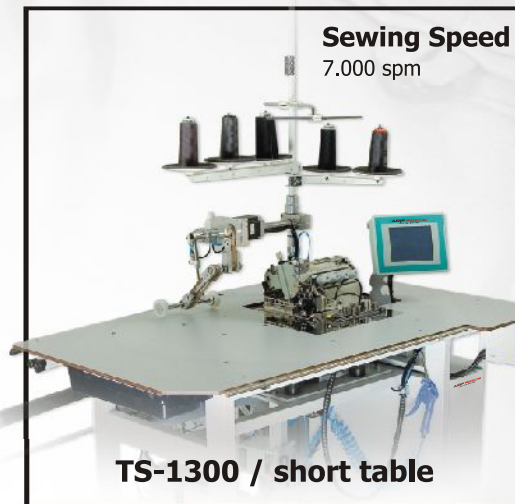
- Seam Width 5 mm Standard and 6 mm Optional
- Top Feed 0 - 6,0mm (TS-1700 only)
- Stitch Length 1 - 5.0 mm
- Differential Feed Ratio 0.5 - 6.0 mm (TS-1700)
- Needle System B27 80-120 Nm
- 40 Programs
- Differential Feed Ratio 0 - 3.0 mm (TS-1600)

Sewing Procedure

- 1 lay the front/ back panel either with or without the lining of the trousers on the work table
- 2 the machine starts sewing automatically thanks to a photocell sensor once the panel is pushed towards the needle
- 3 the panel is automatically guided and the overlock chain automatically trimmed and sucked to the waste bin
- 4 the panel is automatically stacked

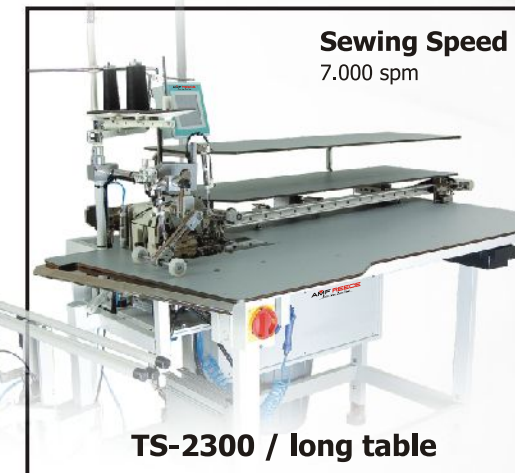
Trouser Side Seamer Machines

The new sewing units TS-1300 and TS-2300 were designed to sew trousers side seams and inseams on trousers, and lining seams on skirts. The machine provides an option of sewing 4 or 5-thread safety stitches and double chainstitch seams. The use of photocell for start and end of sewing increases the productivity. A constant fullness distribution is reached by the differential top and bottom feeding. It is much easier to sew trousers side seams with pockets thanks to our special kit supplied as standard with foot control. Taking advantage of the programmable PLC with touch screen control, the operator can guide the hip curve at maximum sewing speed.



Sewing Speed
7.000 spm

TS-1300 / short table



Sewing Speed
7.000 spm

TS-2300 / long table

Common Features

- Pegasus EXT 3216 Sewing Head
- PLC Control System
- Graphical Touch-Screen Control Panel
- Efka Mini Stop DC Servo Motor
- Pneumatic Contour (Edge) Guiding System
- Automatic Sewing Start and End Photocell
- Air Nozzles on Table for Smooth Fabric Transport
- Manual Fullness Distribution by Differential Top and Bottom Feeding
- Special Sewing Equipment (with Foot Pedal) for Trouser Side Seams with Pockets
- Automatic Chain Cutting Waste Removal

Standard Accessories

TS-2300

- Automatic Rail Guiding System with Photocell Controlled Mouse
- Advanced Stacker
- Fabric Puller

Optional Accessories

TS-2300

- Automatic Fullness Controlled by Step Motors

Optional Accessories

TS-1300

- Fabric Puller
- Automatic Fullness Controlled by Step Motors
- Simple Stacker
- Advanced Stacker

Production Data per 8 hour day

TS-2300

- 650 trousers (4 seams)
- 900 trousers (outsides)
- 1500 trousers (inseams)

Production Data per 8 hour day

TS-1300

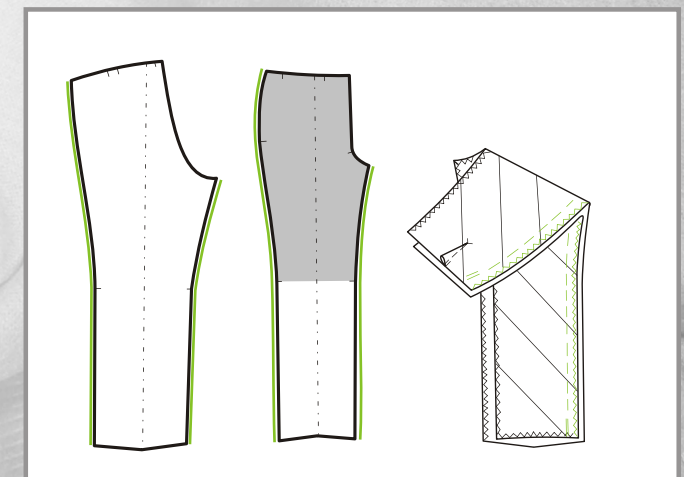
- 650-700 trousers (4 seams)
- 900 trousers (outsides)
- 1200 trousers (inseams)

TS-1300/ TS-2300 Specifications

- Seam Width 10 mm Standard and 11,12 mm Optional
- Top Feed 0 - 6,0mm
- Stitch Length 1.0 - 6.0 mm
- Differential Feed Ratio 0.5 - 6.0 mm
- Needle System B27 80-120 Nm
- 40 Programs

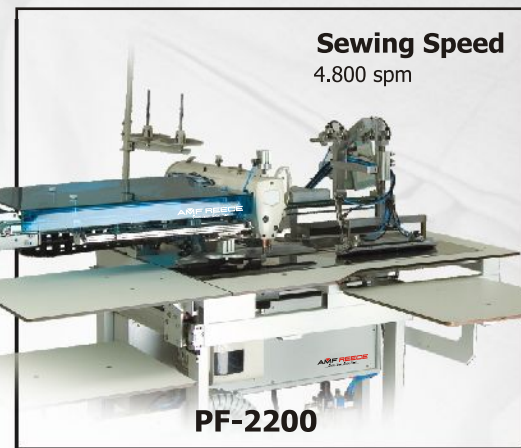
Sewing Procedure

- 1 the front and back trouser panels are aligned at each other
- 2 the mouse clamps the work piece so it stays tightened
- 3 the hip pocket and other difficult section are sewn manually
- 4 the guide is activated and the machine is automatically switched to the automatic sewing
- 5 the overlock chain is trimmed and sucked automatically to the waste bin
- 6 the finished work piece is automatically stacked on the stacker



Sewing Unit for Folding and Attaching of Pockets Facings

The pocket facing machine is used for automatic folding and attaching of pocket facings onto the pocket bags with consistent quality and high productivity.



Features

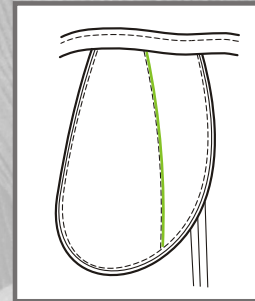
- JUKI DDL 9000S Lockstitch Sewing Head
- The Stitching Length can be Adjusted from the Panel or Controlled Automatically by a Photocell
- Possibility of Alternating between Manual Input of Seam Length or Photocell Controlled Start and Finish of Sewing
- Folding Station for Facings up to 300 mm Long (400 mm Optionally)
- Consistent Sewing Performance on Different Types of Fabrics
- The User-friendly Touch Screen Control Panel Makes it Easy to Change all Stitching Parameters Including the Stitch Length
- AC Servo Motor Combined with PLC Control System Ensures Reliable Operation of the Machine under Difficult Operating Conditions
- Backtacking
- Diagnostic System

Production Data per 8 hour day

- 5.000 - 5.800 pieces

Optional Accessories

- Extra Laser Light for Marking Labels
- Special Folding Station for up to 400 mm Length
- Vacuum Motor
- Label Feeder



Standard Accessories

- Vacuum System for Connecting to Internal Source (Vacuum Motor Optional)
- Stacker
- Top Thread Monitor
- 3 Laser Marking Lights

Specifications

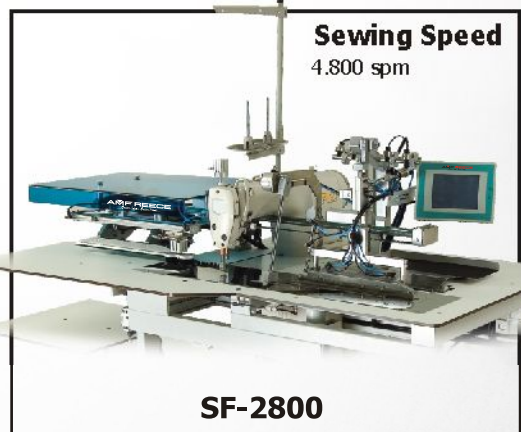
- Stitch Length 0,5 - 6 mm
- Seam Length max 420 mm
- Folding Length 300 mm (Optionally 400 mm)
- Memory 40

Sewing Procedure

- 1 the facing piece and the pocket pouch is placed to the correct position with the help of the laser marking lights
- 2 the facing piece is automatically moved on top of the pocket pouch
- 3 the workpiece is automatically sewn once it is moved towards the needle
- 4 the finished piece is stacked on the stacker fully automatically

Sewing Unit for Felling of Trousers Flies and Attaching Pocket Facings

SF-2800 offers a flexible solution to manufacturers that would like to utilize a single machine for performing up to four different operations. It is possible to sew left and right flies, pocket facings on pocket bags on this unit without mechanical conversion of any parts.



Features

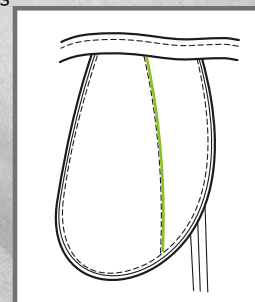
- JUKI DDL 9000S Lockstitch Sewing Head
- PLC and Touch Screen Display
- Servo Motor Controlled Feeding System for Perfect Accuracy
- Fully Overlapping Working Method Increasing Productivity
- Possibility of Alternating between Manual Input of Seam Length or Photocell Controlled Start and Finish of Sewing
- Accurate Notching of the Seam Allowance
- Consistent Stitch Quality on Different Types of Fabrics
- Backtacking
- Diagnostic System

Production Data per 8 hour day

- 5.000-5.800 pocket facings
- 1.000 trousers for attaching left and right fly
- 400 trousers (left & right fly, 4 pocket facings)

Optional Accessories

- Extra Laser Light for Marking Labels
- Special Folding Station for up to 400 mm Length
- Vacuum Motor
- Zipper Loading Guide

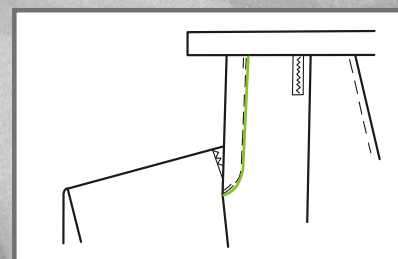


Standard Accessories

- Vacuum System for Connecting to Factory's Vacuum Source (Vacuum Motor Optional)
- Stacker
- Top Thread Monitor
- 3 Laser Marking Lights
- Notching Knives for Left and right Fly
- Left Fly Holder

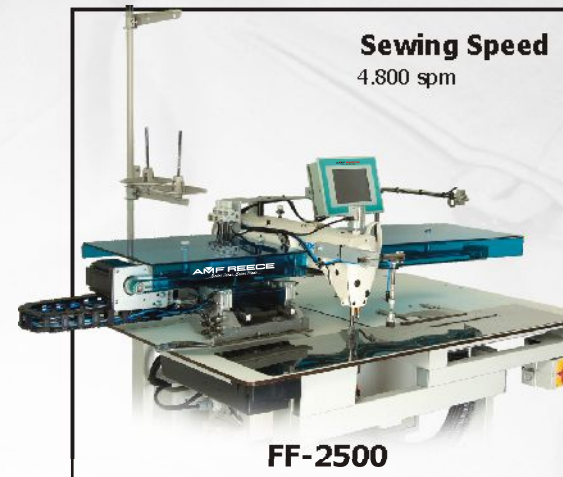
Specifications

- Stitch Length 0.5 - 6.0 mm
- Sewing Length 420 mm
- Memory 40
- Folding Length 300 mm (Optionally 400 mm)



Sewing Unit for Top Stitching of Trousers Fly Fronts

The J stitch machine is an automated sewing unit for the top stitching of fly pieces on trousers for consistency and productivity.



Features

- JUKI DDL 9000S Lockstitch Sewing Head
- Laser marking for the fabric positioning
- Touch screen display panel for setting all parameters
- Accurate seam start/stop and consistency in seam length, which is controlled by a photocell
- Four different top stitch widths that can be easily adjusted by using a quick change mode
- AC servo motor combined with PLC control system to ensure reliable operation of the machine under difficult operating conditions.
- The seam end can be positioned anywhere on the waistband including top or bottom edges.
- Needle thread monitor
- Bobbin thread counter
- Vacuum system for Connecting to Factory's Vacuum Source for easy and accurate placement of trouser panel
- Programmable Backtacking
- Thread Trimming
- Air Pressure Sensor

Production Data per 8 hour day

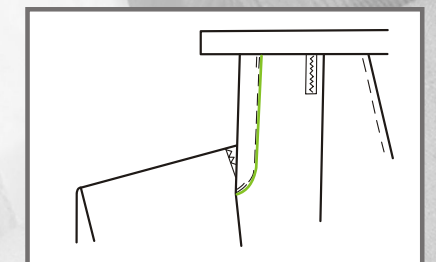
- 2.800 - 3.000 of fly pieces

Optional Accessories

- Extra Laser Light for Marking Labels
- Vacuum Motor

Specifications

- Seam Length Maximum 345 mm with Photocell control
- Stitch Width 32 - 42 mm
- Memory 40
- Stitch Length 0,5-6 mm



Sewing Procedure

- 1 the left front trouser panel with the zipper is placed to the accurate position with the help of the marking laser lights and the workpiece is locked by the vacuum
- 2 the feet arm moves the workpiece to the sewing area where it is top-stitched fully automatically
- 3 the sewing starts and stops automatically by help of a photocell sensor

Sewing Unit for Stitching Waistbands

WC-3300 offers a high quality solution to stitching through waistbands in the seam shadow of trousers and skirt waistbands. The combination of bottom, needle and top puller feed and a high speed sewing head makes it possible to process waistbands accurately and productively. The large clearance below the sewing foot ensures easy line-up of the sewing piece. The spring loaded stop and ergonomically shaped table allows perfect handling of the fabric.



Features

- Juki DDL 9000 S Lockstitch Sewing Head with Control Panel
- Pneumatically Activated Puller System
- Photocell Controlled Puller Up/Down Function
- Top Thread Monitor
- Backtacking in Sequence with Puller Speed
- Height Adjustable Ergonomic Stand
- PLC Control Unite

Production Data per 8 hour day

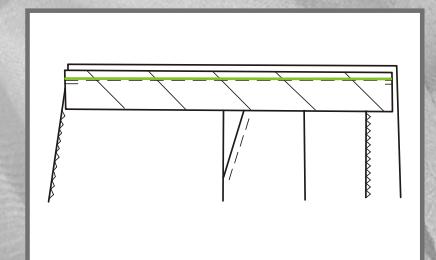
- 650 trousers

Optional Accessories

- Needle-feed Mechanism

Specifications

- Stitch Length up to 6 mm



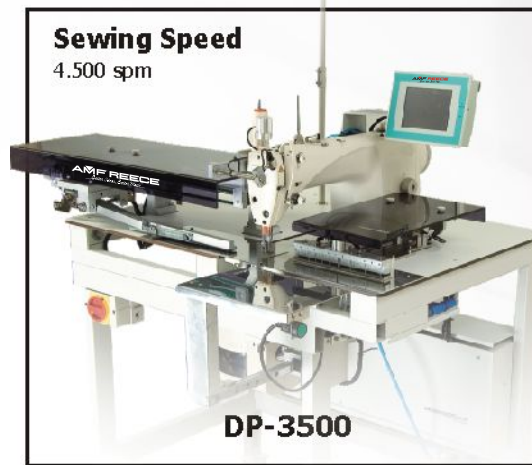
Automatic Short Seamer Unit for Darts and Waistband Pleats

The DP-3500 is an automatic short seamer unit for darts and waistband pleats on trousers, skirts, blouses and also dresses. All seam types are sewn with a consistent quality and desired dimensions that are easily set from the touch screen display.

Even inexperienced operators can create high quality and accurate dart seams and pleats by adjusting the desired length, depth and angle from the user friendly touch screen display. Different specifications of darts and pleats can easily be programmed on the 10 preset memories. The operator can cycle between 4 different dart and pleat sewing programs without having to change any gauge parts which makes the unit very flexible and productive.

High productivity can be achieved by overlapping working method where the operator can load the next fabric piece on the table while the machine is sewing the previous piece. Vacuum system enables easy placement of fabric panels on the unit. Additionally, an air blower unit is included in the presser foot to regulate the fabric while sewing.

Laser light is included as standard for assisting the operator in placing the fabric to the correct position. A needle locking system is used to clamp the fabric accurately. The clamping system adjusts automatically to fabric thickness therefore providing the net desired depth on a dart or pleat. For use on very fine fabrics an alternative clamping device is developed so that the fabric is not pricked. Combination of a moving head and servo motors improves the performance and quality of the sewing.



Features

- Juki DDL 9000 AS Lockstitch Sewing Head
- PLC Control System with Touch Screen Display
- X-Y Control System with AC Servo Motor
- Top Thread Monitor
- Automatic Thread Trimming at the End of the Seam
- Condensed Stitching and Backtacking at the Start and End of the Seam

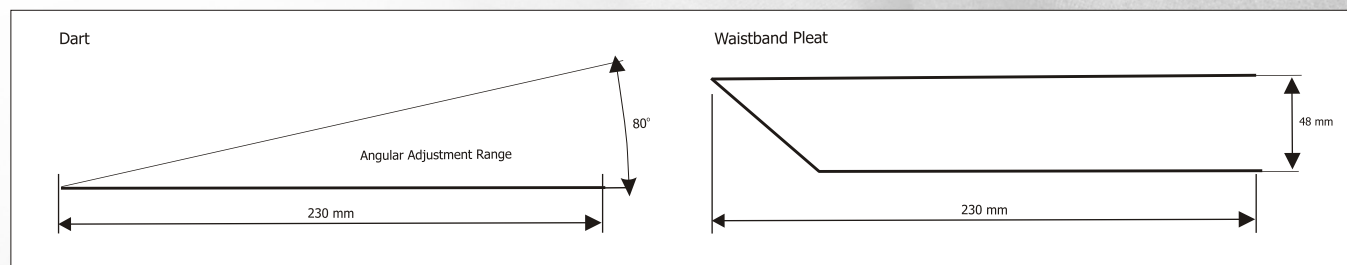
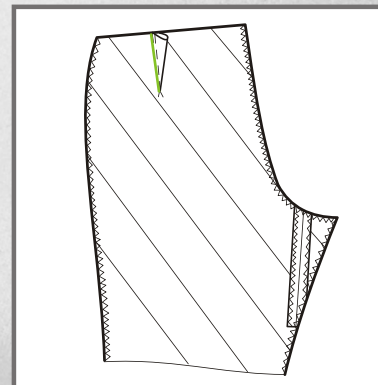
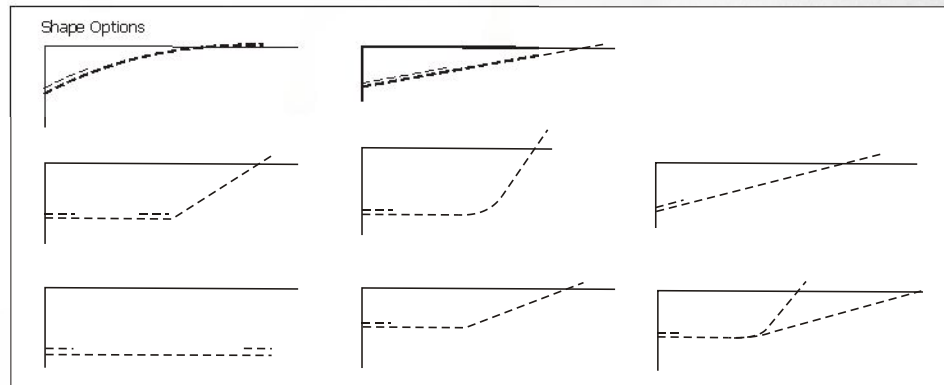
Production Data per 8 hour day
■ 6.000 darts or 4.500 waistband pleats

Standard Accessories

- Automatic Stacking
- Laser Light System
- Vacuum System

Optional Accessory

- Conversion Clamp Kit 350 mm



Specifications

- Seam Length max. 230 mm (Optionally 350mm)
- Seam Depth max. 48 mm
- Stitch Length 0.5 - 6 mm
- Angle Adjustment up to 80 Degrees
- Memory 40

Sewing Unit for Attaching Endless Zippers to Trouser Flies

FZ-3400 is designed to automate attachment of zippers to trouser flies providing numerous advantages such as elimination of fusing operation of fly piece, consistent seam widths due to a special edge guide system, pucker-free operation on difficult to feed fabrics, using of continuous zipper form with minimum zipper waste.



Features

- Juki Twin Needle Chainstitch Sewing Head
- Intermittent Top Puller System with Adjustable Speed to Bottom Feed
- Tape Feeder
- Zipper Feed System with Special Gauge

Production Data per 8 hour day

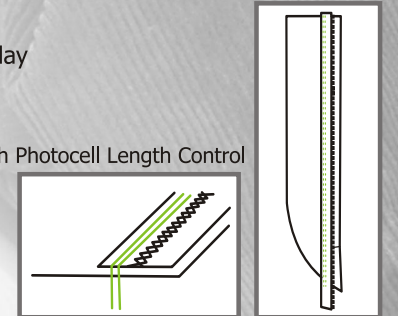
- 1300 trousers

Optional Accessory

- Special Zipper Cutting System with Photocell Length Control

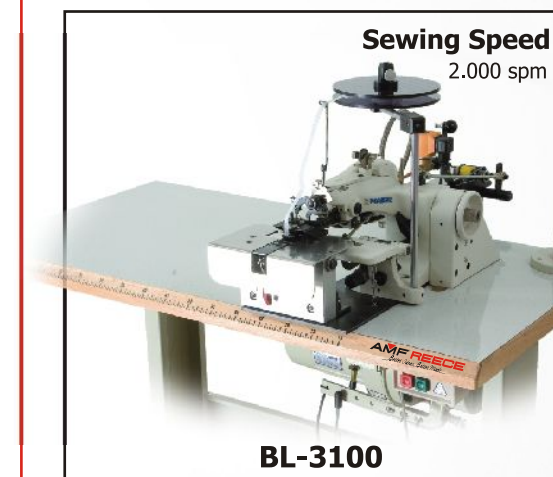
Specifications

- Stitch Length up to 6 mm



Sewing Unit for Preparing Belt Loops on Formal Trousers

The sewing unit is designed to prepare double folded belt loops with inserted tape using a blind stitch sewing head. The operator can form belt loops in a very consistent quality with high productivity.



Features

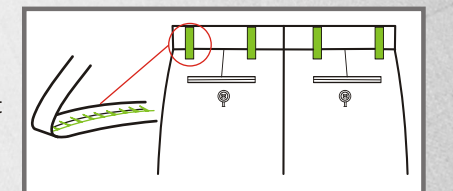
- Maier 221 Class Sewing Head
- Front Cutter for Cutting the Stripes in Folder Width
- Front Feeder for Feeding the Material into the Folder
- Easy Stitch Depth Adjustment for Different Thickness Fabrics
- Thread Puller for Regular Stitch Formation
- Special Knives for Top and Bottom Fabric Cutting
- Rapid Change Device for easy Change of Loop Width Folder

Standard Accessories

- Belt Loop Pressing Kit
- Auto Tape Feeding System
- 10 mm Loop Width Gauge Set

Optional Accessories

- 8 mm Loop Width Gauge Set
- Photocell Controlled Automatic Belt Loop Cutting System
- Special Folding Station for up to 400 mm Length



Specifications

- Stitch Length 3-8 mm
- Stitch Type 103
- Needle System 251
- Belt Loop Width 8-10 mm

Sewing Unit for Waistband Felling on Formal Trousers

The sewing unit is designed for attaching the lining to the waistband using a blind stitch sewing head. The unit can perform equally well on light to heavy fabrics.

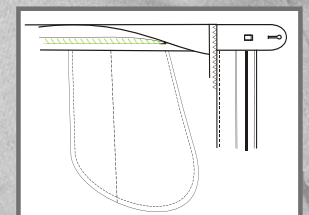


Features

- Strobel Blind Stitch Sewing Head
- Efka AC Servo Motor
- Continuously Adjustable Spring Loaded Plunger for Easy Sewing on Difficult Areas such as Pockets and Belt Loops
- Pneumatically Controlled Compensating System for Adjusting to Different Fabric Thicknesses
- Rubber Upper and Lower Transport System Eliminating Marks on Fabric
- Pneumatic Foot Lifter that Opens up to 15 mm
- Pneumatic Thread Trimming System
- Thread Puller for Loose and Regular Stitch Formation

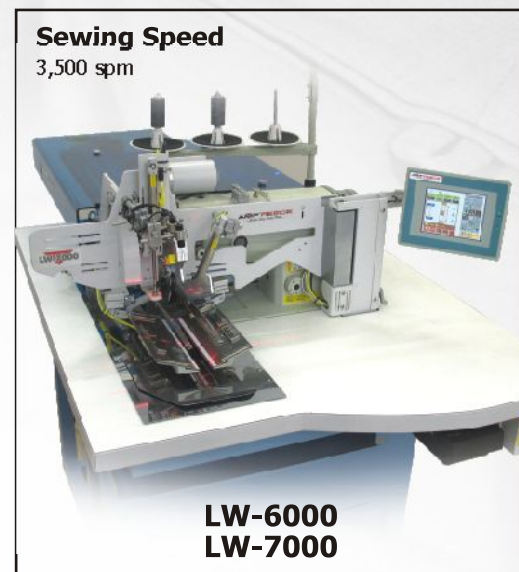
Specifications

- Stitch Length 3-8 mm
- Stitch type 103
- Needle system 251



Pocket Welting Machines

AMF Reece pocketwelting series can be used for all types welted pockets including the straight, slanted (angle) with or without the flap. Available models and wide range of optional accessories make the machine very flexible to meet any manufactures' requirements.



Features

- PLC Control System with Graphic Touch Screen Display
- Programmable Back Tacking and Start/ End Sewing
- Feed System Controlled by DC Servo Motor
- Carriage Drive Controlled by AC Servo Motor
- Stationary Tab Knives
- Automatic Flap Sewing with a Photocell System
- Cycle Sewing for Different Types of Welts Combinations
- Centre Knife Controlled by DC Motor

Standard Accessories

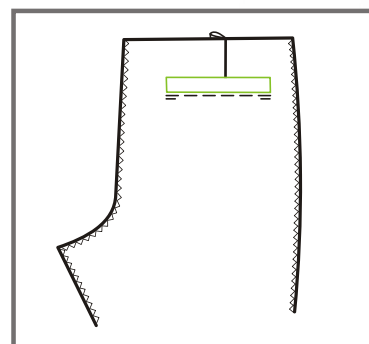
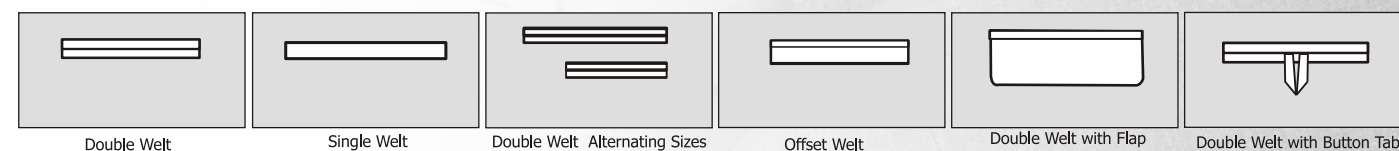
- Top Thread Monitor
- Laser Lights
- Pocket Bag Clamp

Optional Accessory

- Auto Tape Feeder
- Vacuum System
- Dart Stretcher
- Universal and Trouser Stacker
- Work Remover
- Zipper Attachment Unit
- Automatic Patch and Flap Loader
- Welt Notching Device
- Sandwich Clamp Kit
- Needle-Feed Mechanism (LW-7000 only)

Production Data per 8 hour day

- 2.000-2.800 pocketwelts



Specifications

- Welt Length 25-190 mm (option 220 mm)
- Needle Bite Size 10-24 mm
- Memory 54
- Backtacking 3-15 mm
- Cycle Sewing 5 Pocket Styles
- Stitch Density 2,5-20 spcm (start and finish), 1,5-5 spcm (centre)

Button Wrapping & Knotting Machine

The BSW Mark II is button wrapping machine that can be used in any applications that requires shank button. The machine uses normal thread, which eliminates color matching issues as well as the need to buy special, expensive threads



Features

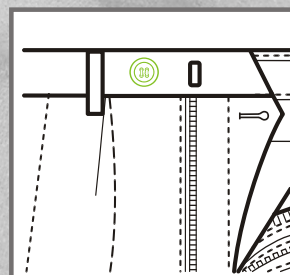
- Programmable Number of Wraps and Knots
- No Needle or Bobbin Required
- Automatic Thread Trimming with a Knife
- Suitable for any Types and Sizes of Buttons
- User-Friendly LCD Display

Production Data per 8 hour day

- 4000 buttons

Specifications

- Number of Wrapping 1-130
- Number of Knotting 1-10
- Shank Height 1-10 mm
- Flat/ Shank Button Size (w x h) 40 x 25 mm



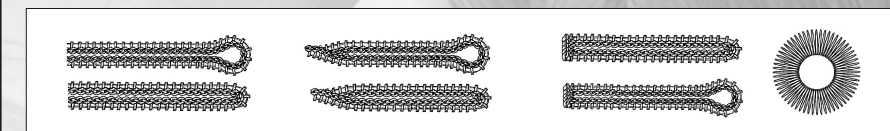
Eyelet Buttonhole Machine

Mechanical

Economy mechanical eyelet buttonhole machine that includes many features associated with higher priced models. It is capable of sewing buttonholes with crossbar finish in one operation. Buttonhole sizes and eye shapes can be changed by the operator with the simple replacement of small a pattern cam. The machine is available in the round eyelet versio that can sew circular holes with single or double thread.

Sewing Speed

1.750 spm



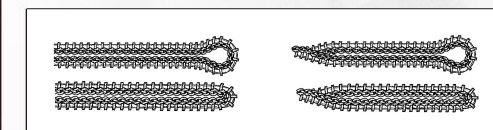
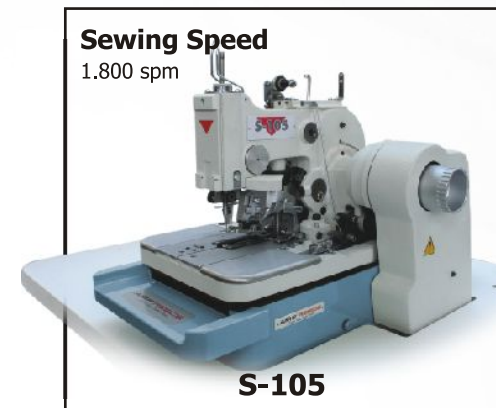
Specifications

- Buttonhole Length 10-32 mm
- Stitch Density 6-16 s/cm
- Top Thread Trimming
- Eye Shape - No Eye; 3,0 x 5,0mm; Optimal 3,0 x 4,0 mm

S-105 is the latest version of mechanical eyelet buttonhole machine combining proven sewing functions of earlier models with new improved mechanisms. The result is an optimization of sewing quality, speed, reliability, ergonomics and noise level.

Sewing Speed

1.800 spm



Specifications

- Buttonhole Length 12-38 mm
- Stitch Density 6-16 s/cm
- Top Thread Trimming
- Eye Shape - No Eye; 2,8 x 4,2 mm

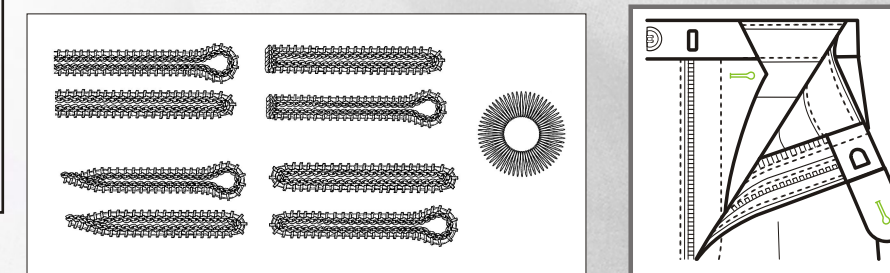
Eyelet Buttonhole Machine

Electronic

Electronically controlled, fully programmable X-Y eyelet buttonhole machine using the latest technology to provide the user with total flexibility and versatility with the widest selection of models to suit every type of manufacturer. All important machine features can be easily set by the operator from the touch screen display that uses graphic symbols to eliminate language barriers. Customers can choose from 3 basic models depending on the trimming mechanism and application. These models can be combined with automatic cutting length (ACL) system that allows the operator to sew different sizes of buttonholes without the need to change the knife or cutting block and ensures high cutting flexibility including the partial buttonhole cutting. Thanks to a specially designed sensor system the machine is able to recognize and activate the correct buttonhole program automatically.

Sewing Speed

2.000 spm



Specifications

- Buttonhole Length 10-50 mm (AF Model); 10-36 mm (LTT Model); 16-32 mm with Change of Clamp Kits (CT Model)
- Eye Shape - No Eye ; 2,2 x 3,0 ; 2,8 x 4,2 ; 3,0 x 4,6 ; 3,2 x 5,0 ; 3,4 x 4,2
- Stitch Bite in Buttonhole 2,1+/- 0.3 mm (Electronic Adjustment); 2,7+/- 0.3 mm (Electronic Adjustment)
- Stitch Bite in CRB 2,1+/- 0.5 mm (Electronic Adjustment); 2,7+/- 0.5 mm (Electronic Adjustment)
- 21 Different Buttonhole Combinations can be Sewn in 47 Different Programs
- Stitch Density 0,5-2,0 mm
- Fly Bar Length 3,0 - 20,0 mm

Applications on Trouser

