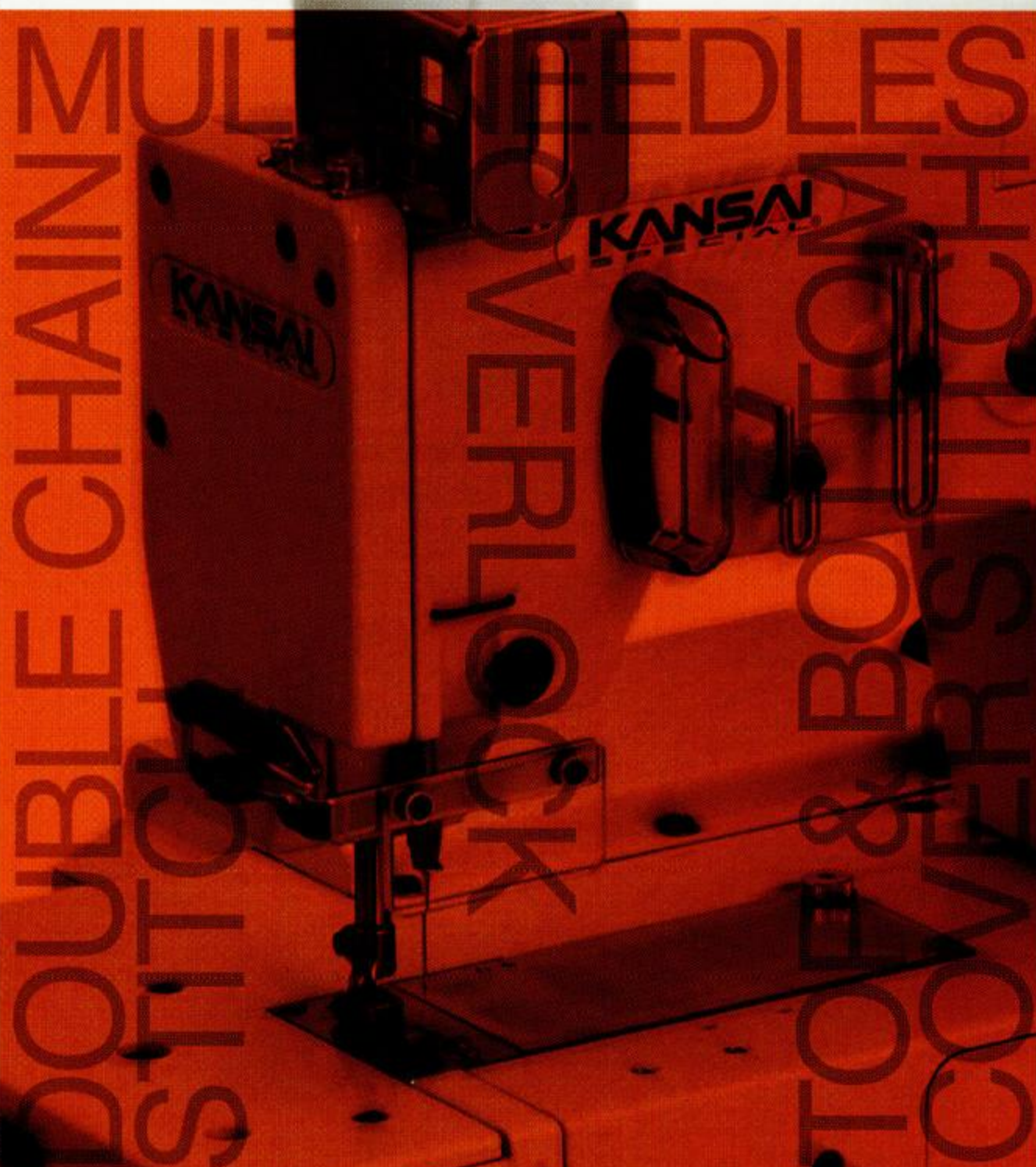


PX SERIES
MMX SERIES
MAC-100
LX-SP



DECORATION

- 1** DOUBLE CHAIN STITCH
- 2** MULTI NEEDLES
- 3** TOP&BOTTOM COVER STITCH
- 4** DECORATION
- 5** OVERLOCK

CONTENTS

INDUSTRIAL SEWING MACHINES
PRODUCTS GUIDE

PX SERIES

| | |
|-----------|---|
| PX-302-4W | 3 |
| PX-302-5W | 4 |

MMX SERIES

| | |
|-----------|---|
| MMX-3303D | 5 |
| MMX-3303F | 6 |

WX · LX SERIES

| | |
|------------|----|
| WX-8803-IS | 12 |
| LX-5801-SP | 13 |

| | |
|-----------------------|----|
| TECHNICAL DATA [仕様明細] | 14 |
|-----------------------|----|



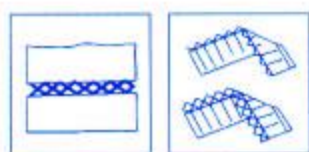
MAC SERIES

MAC-100 7, 8

DFB • BXSERIES

DFB-1404PMD 9
DFB-1412PS-SM 10
DFB-1412PTV 10
DFB-1403PSM-H 10
BX-1033PS-SM 11
BX-1433PS-SM 11

PX SERIES



PX-302-4W

PX シリーズは、フラットベッド1本針、2本針2重千鳥縫いミシンです。4種類のカム、ゲージをそろえており2点、3点、4点、5点と千鳥模様を選ぶことができます。また、ピコット縫い、ファゴッティング、また新モデルの飾り松葉縫い（フラワーピコット）もラインナップに追加され婦人服、子供服、ハンカチ、テーブルクロスなどの製品の飾りに最適で付加価値のある製品に仕上がります。

- サブクラス ■ 301-2S：1本針、2点千鳥ミシン
 ■ 301-3S：1本針、3点千鳥ミシン
 ■ 302-5W：2本針、5点千鳥ミシン

PX series is a flatbed, 1 or 2 needle, double chain stitch machine for achieving wishful design. This machine performs zigzagging by the built-in cam that moves the needles left and right (2~5 points). Applications: various designs using picoting and fagotting. Furthermore, newly developed flower stitching machine(Flower Picot) is joined to this series as new model. Out standing feature of PX series is wide variety of decorative stitch patterns using picoting and fagotting. PX series is our best machine for not only women's and children's clothing but also handkerchiefs, table clothes, table napkins. Your wishful design starts to realize with PX series.

- Subclass ■ 301-2S : 1 Needle, 2 point, zigzag machine
 ■ 301-3S : 1 Needle, 3 point, zigzag machine
 ■ 302-5W : 2 Needle, 5 point, zigzag machine

Cama plana 1 o 2 agujas, doble cadeneta picoeta, 4 diferentes levas, y varias medidas, Zig Zag patrones de 2 a 5 puntos para puntadas decorativas, incluyendo la puntada de flor exclusiva de Kansai Special, esta serie es especial para embellecimiento de ropa para senoras, ninos, y panuelos, etc.

- Subclass ■ 301-2S: 1 aguja, 2 puntos Zig Zag
 ■ 301-3S: 1 aguja, 3 puntos Zig Zag
 ■ 302-5W: 2 agujas, 5 puntos Zig Zag

A serie PX e um leito horizontal, de 1 e 2 agulhas, maquina de ziguezague, ponto decorativo de cadeia dupla.

Fornecida para 4 tipos de seguidores e medidores. Seleccionaveis de modelos de ziguezague de 2, 3, 4 e 5 pontos.

A Serie PX tem um ampla selecao de modelos de ziguezague para picotear e pontilhar.

Alem disso, desenvolveu recentemente a Maquina "Pontuacao Florida" que e unida da esta serie como novo modelo.

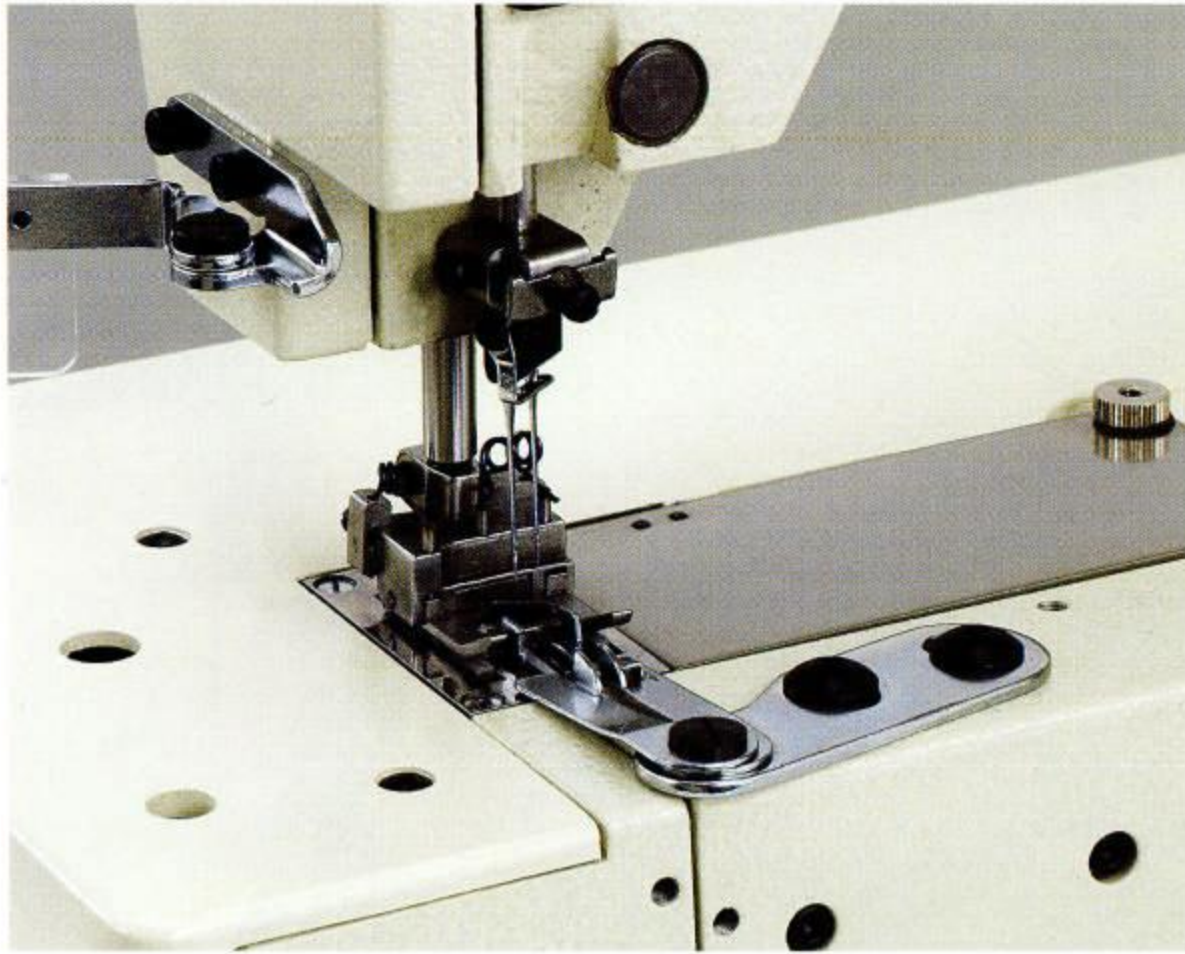
Portanto, mais adequada para roupas, blusas de senhoras, roupa de crianca, lenços, toalhas de mesa, cortinas, etc.

Desse modo, a serie PX faz os bens crescerem de valor para voce.

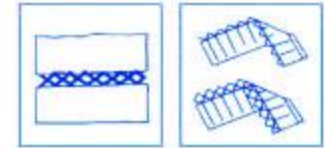
- Subclasse ■ 301-2S: 1 Agulha, 2 pontos, Maquina de ziguezague
 ■ 301-3S: 1 Agulha, 3 pontos, Maquina de ziguezague
 ■ 302 5W:2 Agulhas, 5 pontos, Maquina de ziguezague

PX系列是平台式1针、2针双环外曲牙缝纫机。4种齿轮、针位能缝2点、3点、4点、5点外曲牙。

外曲牙、花形外曲牙、另外追加了新型的松叶状花形、最适合女装、童装、手帕、桌布等有附加价值的产品的装饰缝。



PX-302-5W



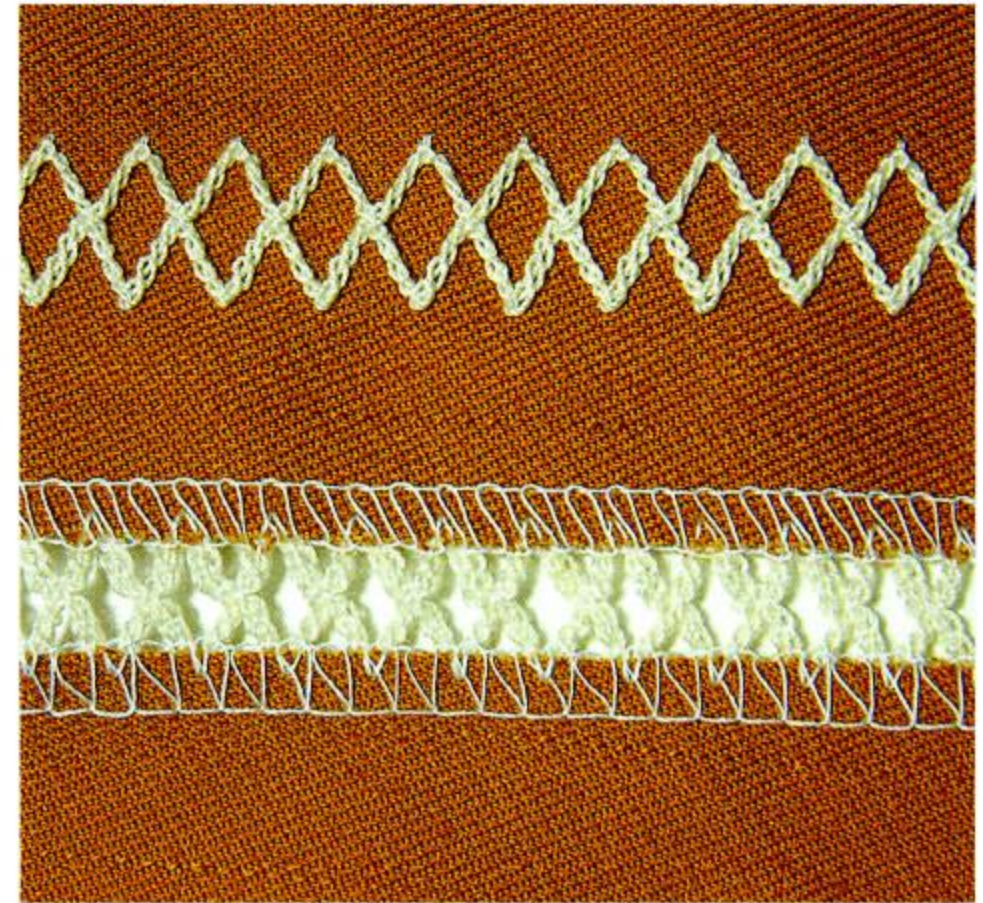
2本針二重環5点千鳥ミシン

2 needle, double chain stitch, 5-point zigzag machine.

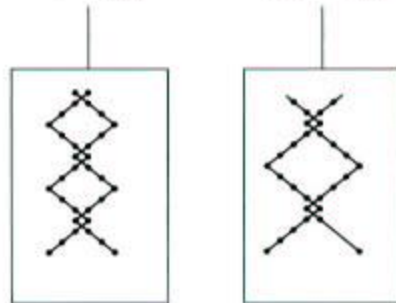
2 agujas doble cadeneta; 5 puntos(4 pasos)maquina de zig-zag.

2 agulhas, croche, 5 pontos (4 passos),maquina de ziguezague.

双针双圈链锁线迹五点锯齿缝纫机



P X 3 0 2 - 4 W · 5 W



| SINGLE PICOTTING |
|------------------|
| |
| |

| DOUBLE PICOTTING | FAGOTTING |
|------------------|-----------|
| | |
| | |

MMX SERIES



MMX-3303D
(PAT・P)

飾り縫いには定評があるKANSAIより、より高速で安定性のある新しいスモック飾り縫いマシンが誕生しました。婦人服、子供服、下着、スポーツウェア等の地縫い、テープ付け縫いに最適です。従来モデルは、カムの種類が3種類でしたが更にMMXシリーズでは3種類を追加しました。またカムの交換も非常に簡素化されカムの振り板（スプレッター）を微調整する必要はなくなりました。振り板（スプレッター）を上下2段式にすることによりスモッキング糸（模様）が生地に対してより自然にフィットします。

This new smocking machine with high speed and stabilized performance is just released from KANSAI who has a reputation in the field of Decorative sewing machine. Most suitable for hemming and taping such as lady's wear, children's wear, underwear, sportswear and so on. 6 kinds of standard cams are available as the conventional model. Very easy to change the cam. No need to adjust the spreaders. The smocking threads fit with the fabric naturally by adopting dual oscillating spreaders.

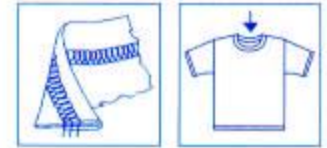
Esta es nueva maquina de puntada decorativa (smocking) de alta velocidad, Kansai Special. Acaba de introducirla al mercado es indicada para ropa de senora, ninos, ropa deportiva. 3 clases de leva son standar en los modelos convencionales, en esta serie nueva de MMX hay 3 levas opcionales, para hacer diferentes aplicaciones, y es muy facil hacer el cambio de leva, no es necesario ajustar los esparcidores. El hilo para la puntada decorativa, se adopta a la tela muy facilmente, debido a que tiene 2 etapas de los esparcidores de arriba, y abajo.

Esta nova maquina para ponto decorativo com alta velocidade e desempenho estabilizado acaba de ser lancada pela KANSAI que tem uma reputacao no campo de costura decorativa. Mais adequada para bordar e colocar fita em roupa de senhoras, crianacas, roupa intima, roupa esporte etc. Esta disponivel em tres tipos de seguidores padrao como modelo convencional. Alem disso, estas novas series MMX estao tambem disponiveis em mais de 3 tipos de seguidores opcionais para atender varias aplicacoes. Muito facil para mudar o seguidor. Sem nenhuma necessidade de ajustar os distribuidores. Os fios de costura decorativos se adaptam muito facilmente ao tecido devido a adocao de 3 estagios de distribuidores inferiores e superiores

装饰缝收到好评的KANSAI开发出更高速的安定性强的新装饰缝的缝纫机。用于女装、童装、内衣、运动服等服装、并可用于滚领。MMX系列在以前的3种花盘的基础上追加了3种花盘。并且花盘交换简易化、不需要做微调整。装饰板上下两段分开、使装饰缝迹更与布料吻合。



MMX-3303F



3本針下面飾りテープ付け用スモッキングマシン

3 needle, bottom coverstitch with smocking for tape binding.

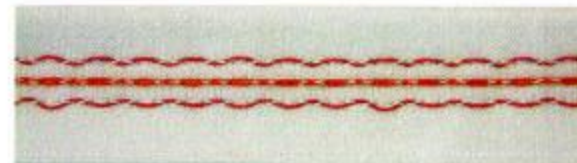
3 agujas, recubridor inferior, puntada decorativa para pegar cintas.

Ponto de costura de cobertura inferior com 3 agulhas para unir fita decorativa.

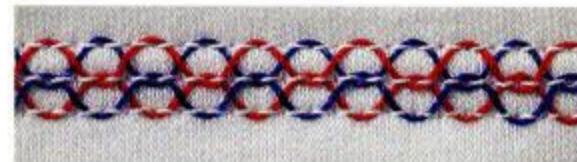
3 针装饰滚领缝



CAM#7



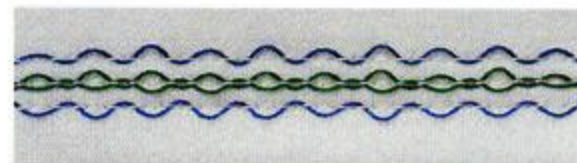
CAM#8



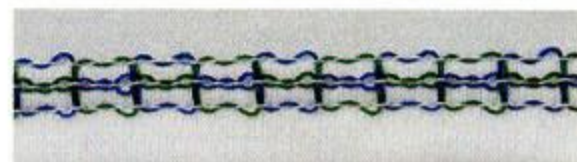
CAM#9



CAM#10



CAM#12



CAM#13

カムの種類及び模様 Smocking Description

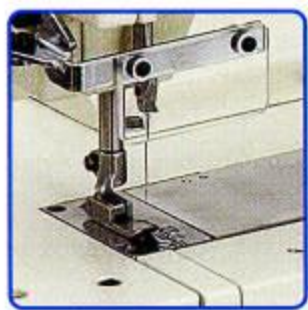
飾り糸ループ - (上) / Top Smocking Looper
 飾り糸ループ - (下) / Bottom Smocking Looper

| カム No. CAM No. | | | | | | | | |
|-----------------------------------|--|--|--|--|--|--|--|--|
| No. 7 品番 PART No. 04-357 | | | | | | | | |
| No. 8 品番 PART No. 04-358 | | | | | | | | |
| No. 9 品番 PART No. 04-359 | | | | | | | | |

飾り糸ループ - (上) / Top Smocking Looper
 飾り糸ループ - (下) / Bottom Smocking Looper

| カム No. CAM No. | | | | | | | | |
|------------------------------------|--|--|--|--|--|--|--|--|
| No. 10 品番 PART No. 04-360 | | | | | | | | |
| No. 12 品番 PART No. 04-362 | | | | | | | | |
| No. 13 品番 PART No. 04-363 | | | | | | | | |

MAC SERIES



MAC-100

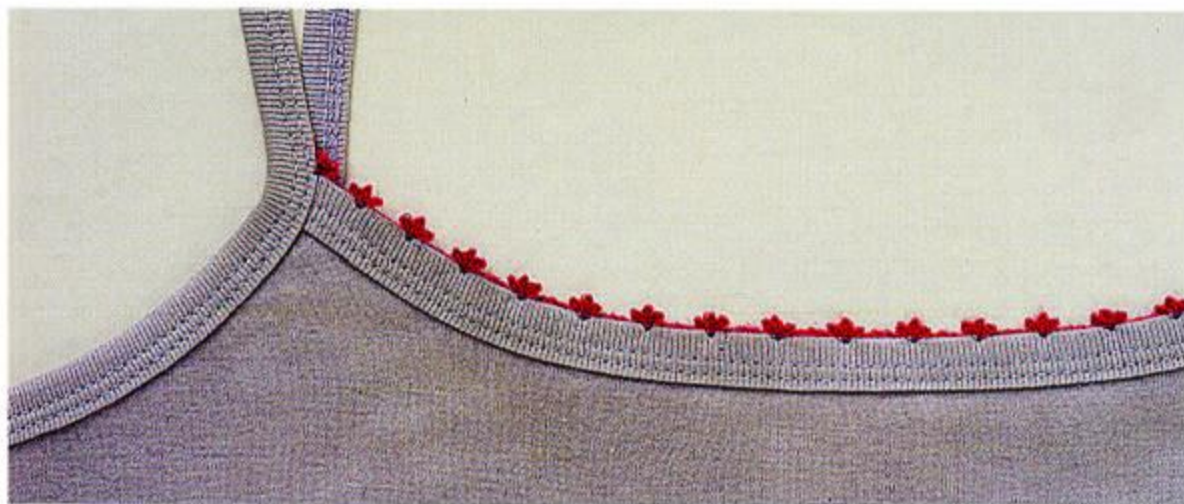
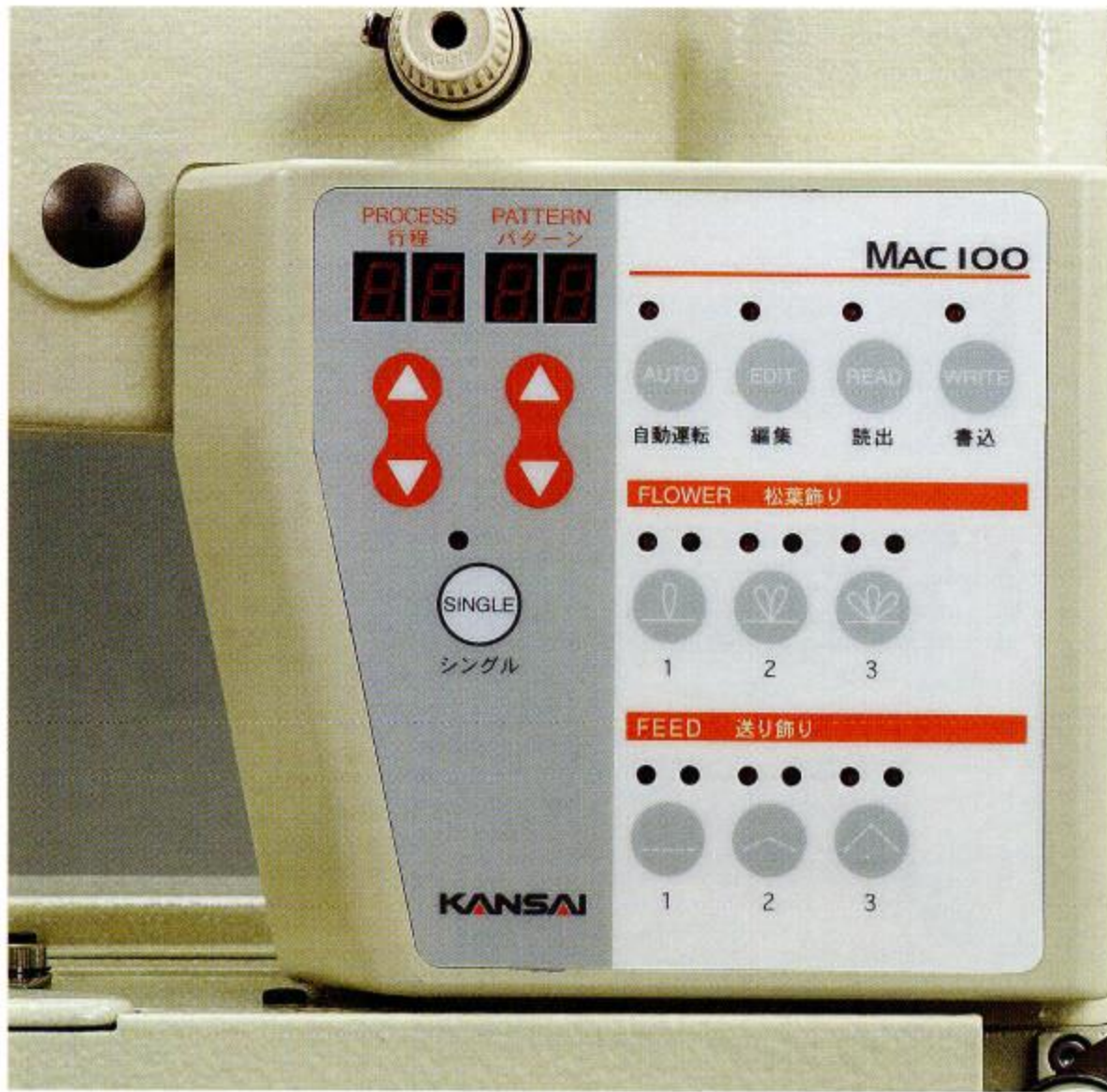
MAC-100 シリーズは、飾り縫いミシンのハイエンドモデルです。弊社、PX シリーズの4点千鳥でジグザグ模様と飾り松葉縫いを電子制御により多種多様に組み合わせお客様自身が好みの模様を創造することができる画期的な商品です。基盤や内蔵メモリーのトラブル発生時もお客様自身で簡単に交換、修復することができます。標準モデルは、T-シャツ、ニットウェア、ハンカチなどの縁かがりですが、一部のパーツ交換により地縫いで飾りを入れることもできます。MAC-100はお客様の21世紀の中心になることをお約束いたします。

MAC-100 series is a high-end model of decorative stitch machine. This series is epochmaking of PX 4 points zigzag having a great variety of combination between zigzag design and flower picotting by electric system. It is so easy to repair and replace by yourself, even in case of trouble in electric chip and built-in memory. Standard model can be used on the edge of T-shirts, knitwear, handkerchief, etc and also possible to sew decorative plain stitch by changing some parts. MAC-100 brings you to brilliant future of 21st century.

La serie MAC-100 es una maquina modelo de alta calidad de puntadas decorativas. Esta serie es una maquina zigzag PX de 4 puntos que tiene una gran variedad de combinaciones entre disenos zigzag y puntada de flor por sistemas electricas. El modelo estandar puede ser cosido en el borde de playeras, tejidos, panielos, etc. y tambien es posible ser cosido por puntadas decorativas completas cambiando algunas partes. MAC-100 le brinda un brillante futuro del siglo 21.

Serie MAC-100 e uma maquina de costura decorativa modelo de alto acabamento. Esta serie e efetua zig-zag de 4 pontos PX com uma grande variedade de combinacao entre o desenho de zig-zag e picote de flor por sistema eletrico. E tao facil de reparar e substituir por voce mesmo, mesmo em caso de problema no chi eletrico e memoria embutida. O modelo padrao pode costurar na borda de camisetas, malha, lencos, etc. e tambem e possivel costura reta decorativa trocando algumas pecas. MAC-100 lhe transporta ao futuro brilhante do seculo 21.

MAC-100系列是装饰缝的高技术型缝纫机。本公司的PX系列的4点外曲牙和花形外曲牙通过电子控制产生各种组合花形、供客户选用。内藏的电子芯片交换容易、便于维修。标准型为各种布料的外边缝、一部分零件交换后可用于布料中的装饰缝。我们有信心认为MAC-100将是21世纪受广大客户欢迎的机种之一。



MAC-100

(PAT・P)

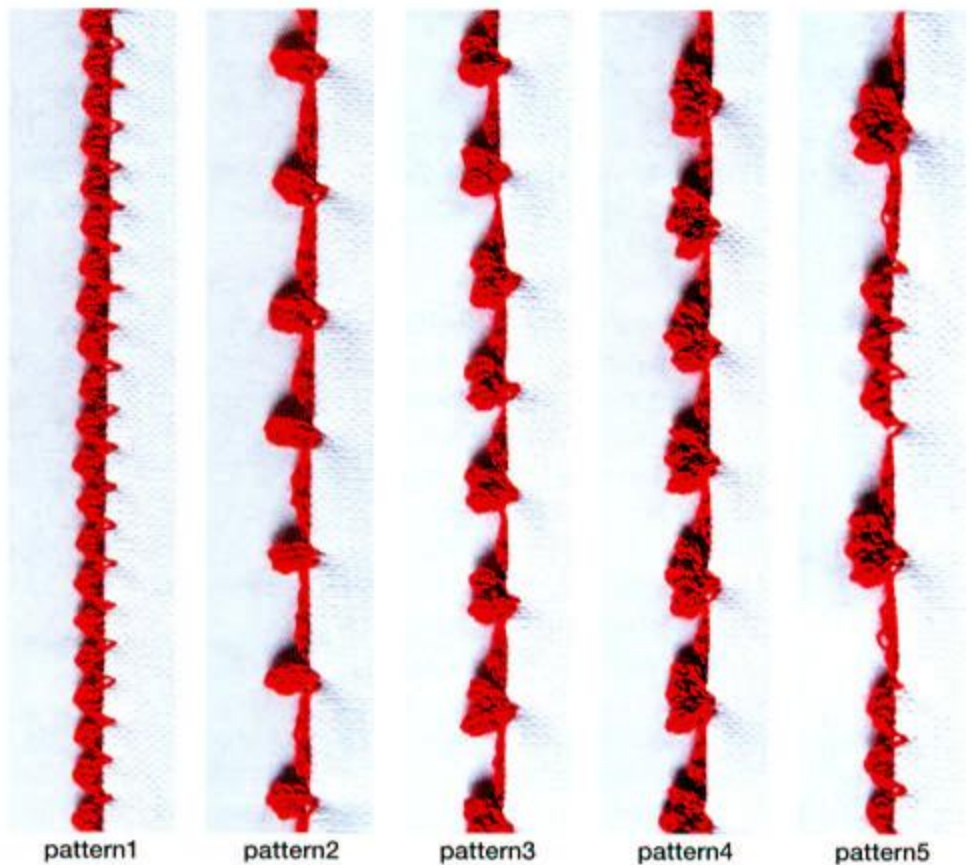
飾り縫いのハイエンドモデルです。PXシリーズの4点千鳥でジグザグ模様と飾り松葉縫いを電子制御により多種多様に組み合わせてお客様自身が好みの模様を創造することができる画期的な商品です。

high-end model of decorative stitch machine. Epockmaking of PX 4 points zigzag having a great variety of combination between zigzag design and flower picotting by electric system.

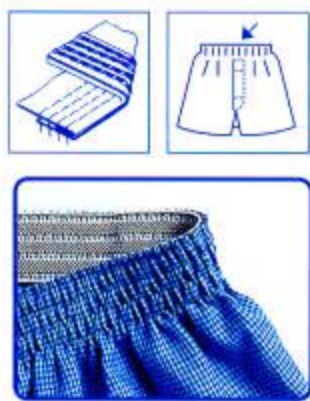
una maquina modelo de alta calidad de puntadas decorativas. Zigzag PX de 4 puntos que tiene una gran variedad de combinaciones entre disenos zigzag y puntada de flor por sistemas electricos.

uma maquina de costura decorativa modelo de alto acabamento. Zig-zag de 4 pontos PX com uma grande variedade de combinacao entre o desenho de zig-zag e picote de flor por sistema eletrico.

电子外曲和花型机外曲牙和花形缝的组合，产生各种花样缝
通过电子控制产生各种装饰缝花样



DFB・BX SERIES



DFB-1404PMD

DFB、BX シリーズは、フラットベッド多本針二重環縫いミシンです。ゴム付け(入れ)、前立て縫い、ライン付け、腰帯付けやスマッキング、シャーリングなど下着、スポーツウェア、婦人服、室内装飾品にいたるまで汎用性に優れたシリーズです。ルーバー縦振り機構の為、2~33本針までゲージの種類も多く針数も製品に合わせて選んで頂けます。

サブクラス ■MR:ひだ取り装置付きミシン ■WB:ウェストバンド用ミシン ■PSF:前立て用ミシン ■PSM:スマッキングミシン ■PS-SM:シャーリング+スマッキングミシン
 ■ET:下糸ゴム糸専用 ■PS-ET:シャーリングミシン(上糸スパン糸、下糸ゴム糸) ■PQ:シャーリングミシン(上糸スパン糸、下糸スパン糸+ゴム糸) ■PL:ライン付けミシン
 オプション ■MD-1:前ゴム送り装置

DFB, BX series are a flatbed, multi needles, double chainstitch machine.

These series are multi-purpose machines for attaching elastic, attaching waistband, sewing the front of shirts, attaching line tapes, smocking and shirring etc., which are ideal for underwear, sportswear, lady's clothes, interior decorated goods (curtains, table-clothes etc.).

There are 2 up to 33 needles available due to vertical movement of the looper and also many kinds of gauges which are selectable according to your needs.

Subclass ■MR: Machine with Ruffling Device ■WB: Machine for Attaching Waistbands ■PSF: Machine for shirt fronting
 ■PSM: Machine for smocking ■PS-SM: Machine for simultaneous shirring + smocking ■ET: Looper thread elastic model
 ■PS-ET: Machine with Shirring (Needle: Polyester Thread, Looper: Elastic Thread)
 ■PQ: Machine with Shirring (Needle: Polyester Thread, Looper: Polyester Thread, Elastic Thread: threading on surface of needle plate.)
 ■PL: Machine for Attaching Line Tapes

Option ■MD-1: Metering Device

Cama plana multiagujas, doble cadeneta extremadamente versatil, para adaptar elastico, frente de camisa, puntada decorativa y pliegues, ideal para ropa interior, ropa deportiva, cortinas, manteles, etc. Movimiento del garfio vertical, de 2 a 33 agujas con diferentes medidas para su necesidad.

Subclass ■MR: Aparato Rizar ■WB: Pegar cintura ■PSF: Frente de camisa ■PSM: Aparato decorativo ■PS-SM: Aparato, alforzas, decorativo
 ■ET: Garfio, Hilo elastico ■PS-ET: Alforzas, hilos poliester, elastico ■PQ: Alforzas, garfio, para elastico, hilos poliester ■PL: Pegar cintas

Opciones ■MD: Docificador de elastico

As series DFB, BX sao maquinas de costura de ponto duplo. Essas series sao maquinas de propositos multiplos para prender elasticos, prender cintas, costurar a frente de camisas, prender fitas de linha, e franzido, que sao ideais para roupas de baixo, roupas esportivas, roupas femininas, bens de decoracao de interiores (cortinas, toalhas de mesa, etc.).

Disponiveis de 2 a 33 agulhas devido ao movimento vertical da presilha e tambem disponiveis em muitos tipos de medidas selecionaveis de acordo com suas necessidades.

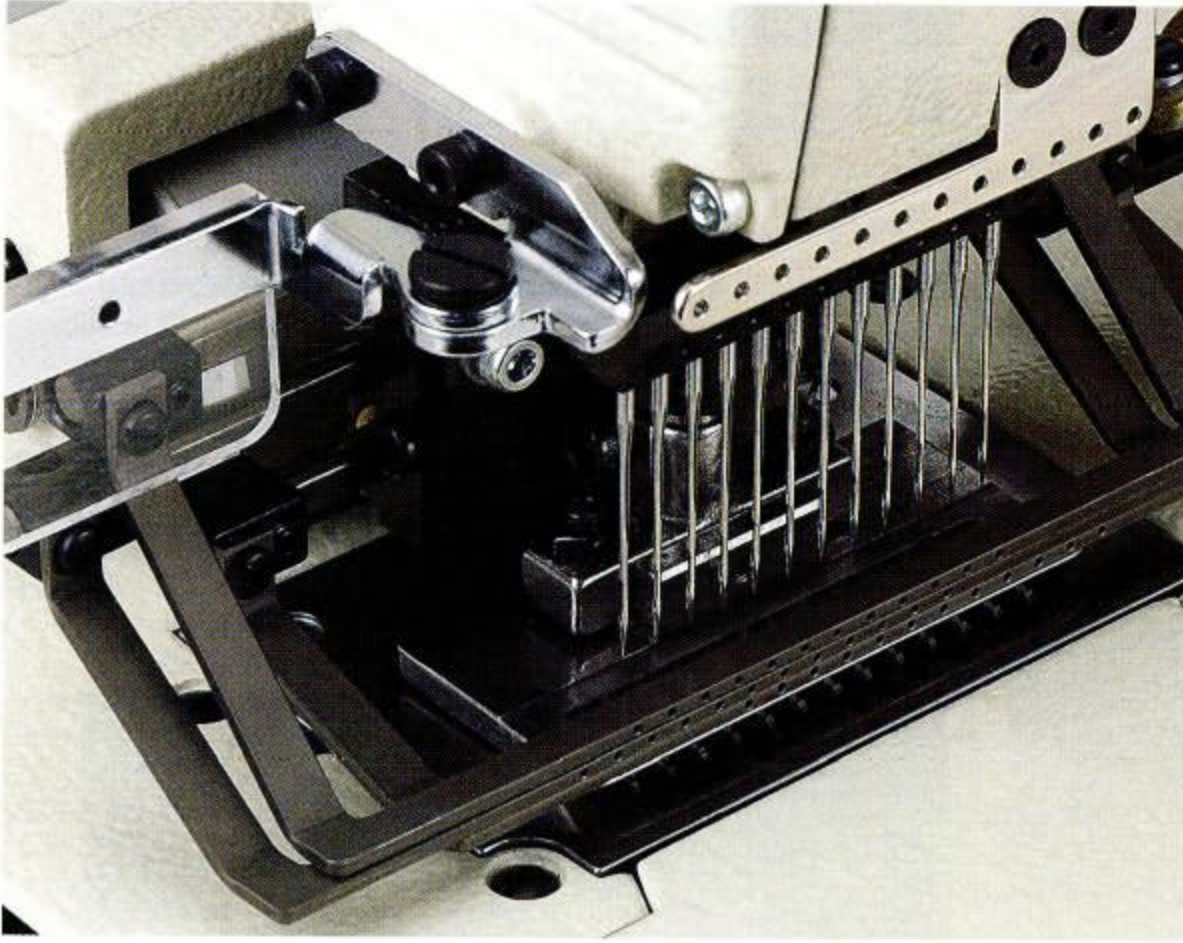
Subclass ■MR: Maquina com dispositivo de frisar ■WB: Maquina para prender cintas ■PSF: Maquina para costurar a frente de camisas
 ■PSM: Maquina com Dispositivo de franzido ■PS-SM: Maquina para franzir + dispositivo de franzir ■ET: Modelo de presilha de elastico
 ■PS-ET: Maquina com franzido (Agulha: Linha de poliester, presilha: fio de elastico)
 ■PQ: Maquina com franzido (agulha: Fio de poliester: presilha: fio de poliester + fio elastico) ■PL: Maquina para prender fita de linha

Option ■MD-1: Dispositivo de medicao.

DFB、BX系列为平台式多针机。上松紧、门襟、滚条、上腰、装饰缝等用于内衣、运动服、妇女服、室内装饰品等广范围。弯针为纵向摆动,2~33针的各种针位可供选择。

分型号: ■MR:打拦装置附带 ■WB:上腰机
 ■PSF:门襟机 ■PSM:装饰用
 ■PS-SM:打拦和装饰 ■PQ:打拦<上线是普通线、下线是普通线和松紧线>
 ■PL:滚条机 ■ET:下线为松紧线专用

附加装置: ■MD-1:前松紧送布调整装置

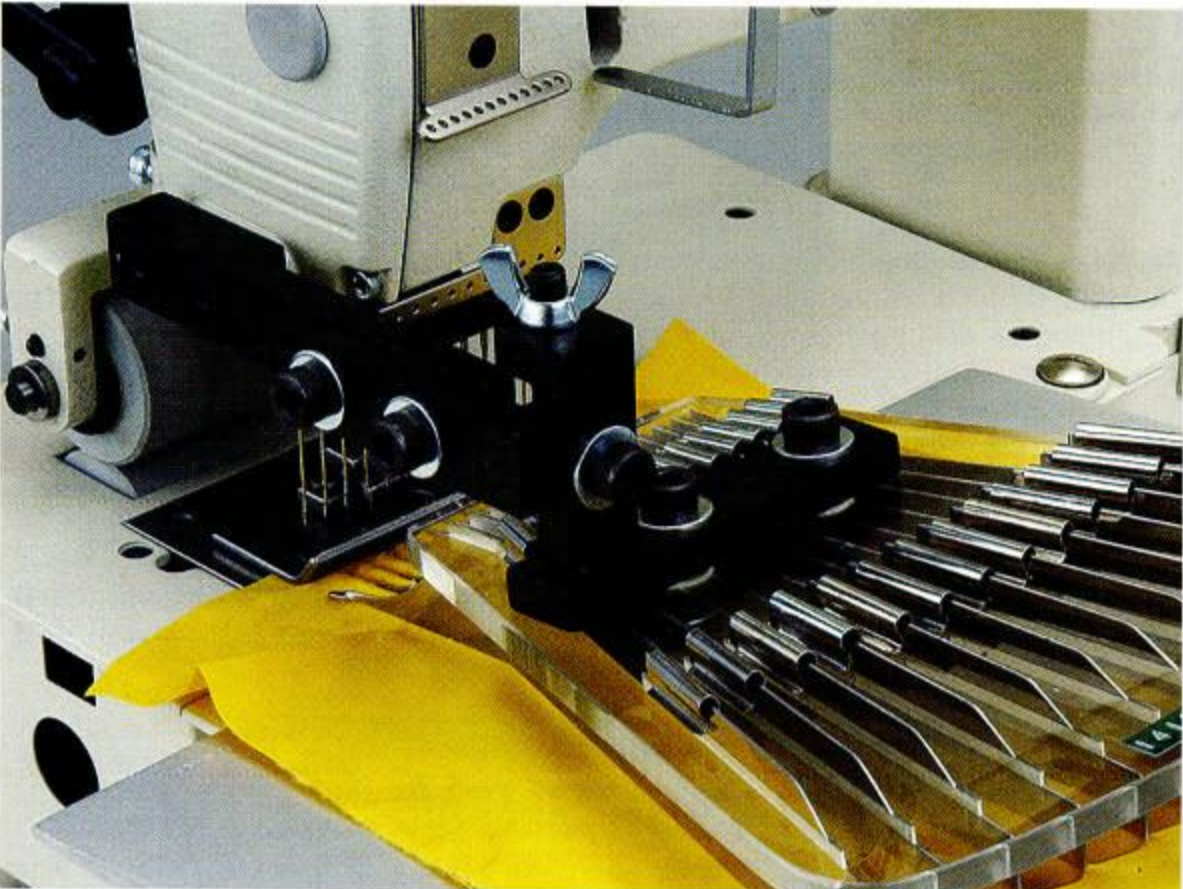
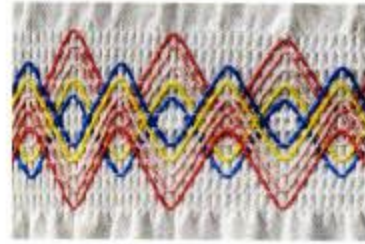


DFB-1412PS-SM



12本針スモッキングマシン
9種類のカムによりあらゆるデザインが可能です。
12 needle, flatbed machine with 9 different smocking cams.
12 agujas, con puntada decorativa con 9 diferentes CAMS.
Maquina de 12 agujas para franzir. Equipada com 9 tipos de mancais para costurar varios tipos de desenhos.

十二针正面装饰刺绣线迹缝纫机
由于九种凸轮，可缝各种图案

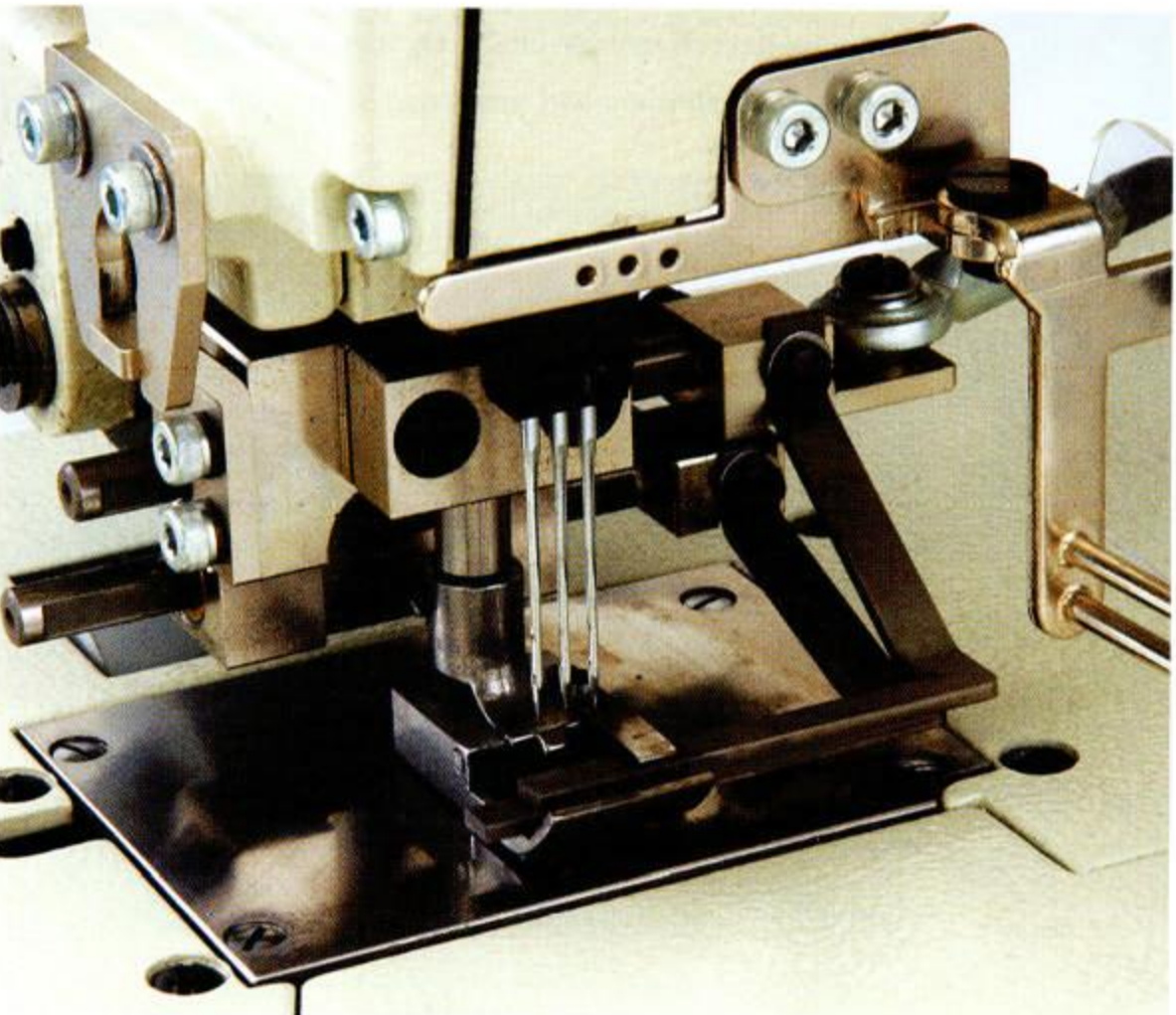


DFB-1412PTV

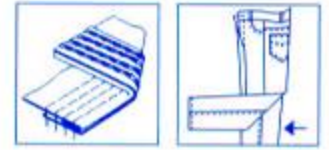


12本針ピントックマシン
ピントック幅は爪の交換により2mm、5mm、8mmの3種類が可能
12 needle, flatbed machine with pintucking.
12 agujas, looper vertical, doble puntada en cadena, maquina de cama plana con accesorios para pliegues y puller.
Maquina de base plana, 12 agujas, lacada vertical, cadeia de pontos dupla, com conexao de pino preegador e puchador.

12针双重链式打摺机



DFB-1403PSM-H



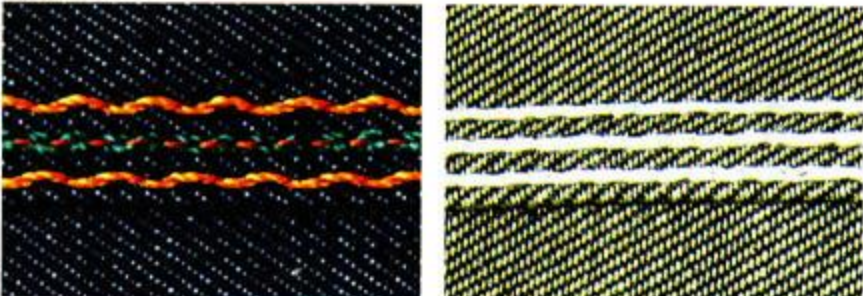
3本針二重環スモッキングマシン。6種類のカムによりあらゆるデザインが可能です厚物素材に適します。

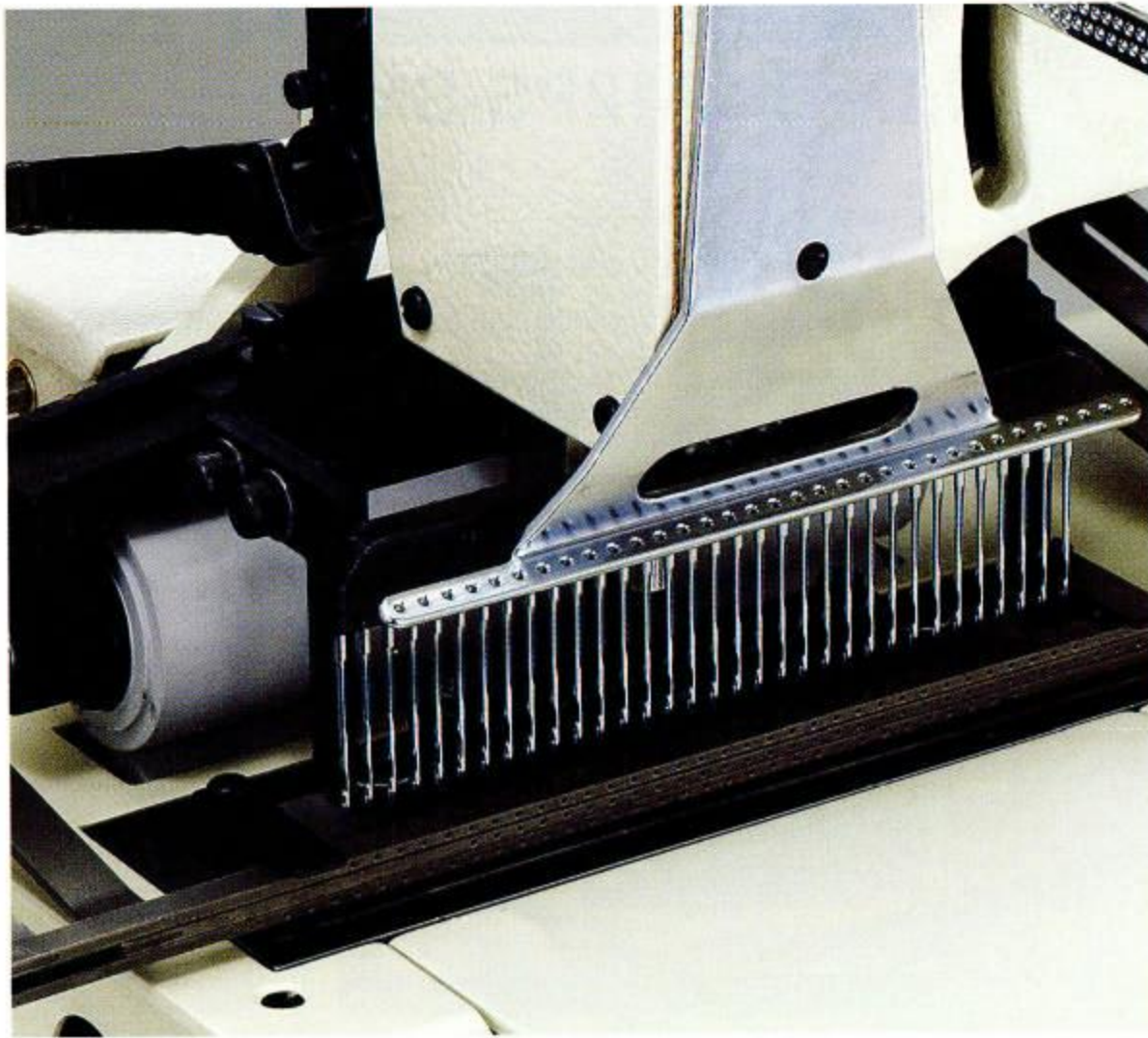
3 needle, flatbed machine with 6 different smocking cams. Suitable for heavy material.

3 agujas, con puntada decorativa con 6 diferentes cams. Conveniente para material pesado.

3 agulhas, om pontos decorativos de 6 cams diferentes
3针双重环褶皱缝纫机。用6种花盘所有的设计可能。
根据针规量交换，也适合厚物素材。

CAM NO.8





BX-1033PS-SM



33本針単環ゴム糸用スモッキングマシン

33-needle flatbed single chain stitch machine for simultaneous shirring and smocking. Needle(upper) thread: Elastic No Lower thread

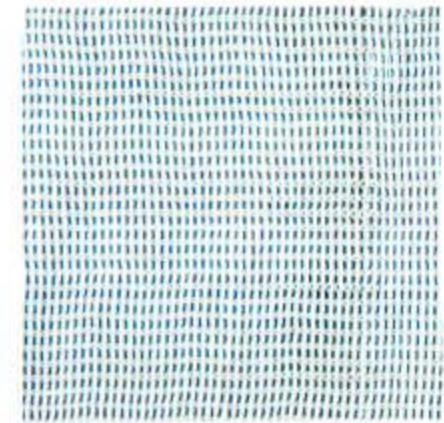
33 agujas garfios verticales, una cadeneta, cama plana, para pliegues y puntada decorativa, con arrastrador.

Maquina de 33 agulhas, presilha vertical, ponto simples, de base plana para operacoes de franzido, com extrator.

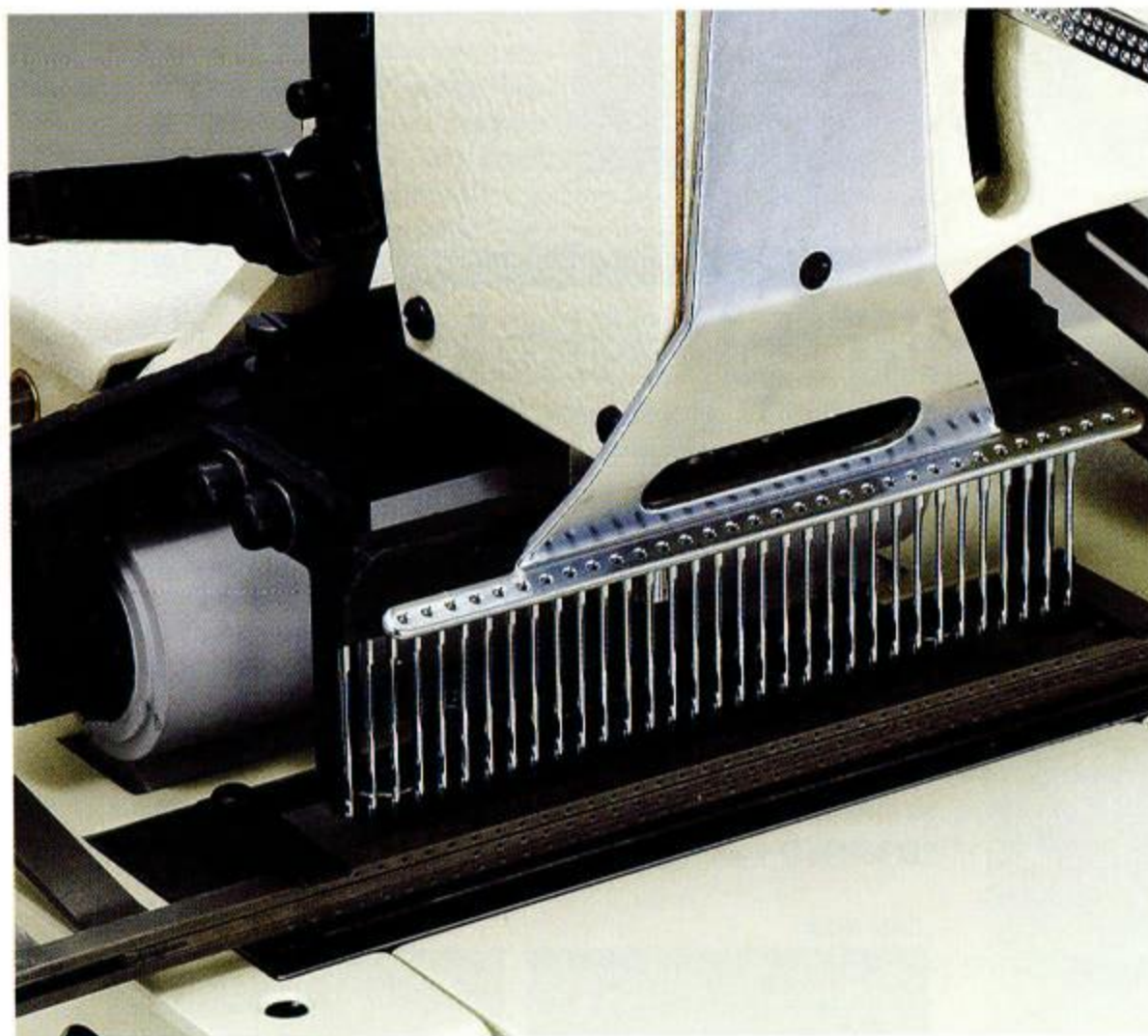
三十三针单环装饰缝



FRONT



BACK



BX-1433PS-SM

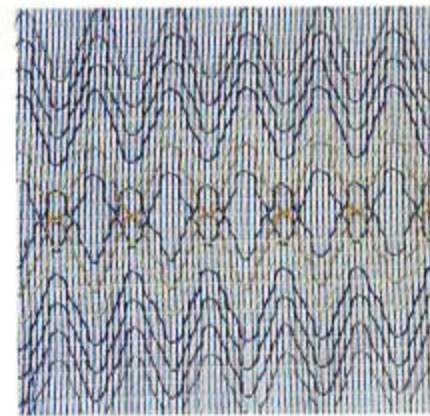
33本針二重環縫いシャーリング、スモッキングマシン

33 needle, flatbed, double chain stitch machine for simultaneous shirring and smocking with 9 different cams for various designs.

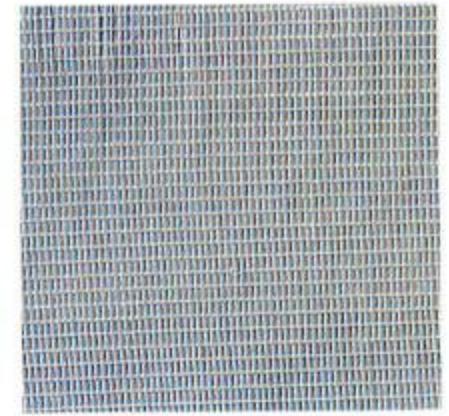
33 agujas; para pliegues y puntadas decorativas, con 9 diferentes cams (para varios disenos).

Maquina de 33 agulhas para franzir (9 mancais diferentes para varios desenhos).

33针两重环装饰缝打挽缝纫机(打平打皱通用)



FRONT



BACK

WX・LX SERIES

WX シリーズは、フラットベット高速、高性能両面飾り偏平縫いミシンです。1本針のLXから4本針のモデルWX8842-1まで、平縫いからテープ付け、かぶせ縫い、レースゴム付け、テープ取り、ポケット向布付、シェルステッチテープ付けなど応用範囲の広いシリーズです。プッシュボタン式送り調節機構により容易に縫い目の長さを変更することができます。(最大4mm、6針/1インチ) 安定した縫い調子、伸びのある美しい縫い目からあらゆるニット、メリヤス製品に最適です。
サブクラス ■EMK: 上ゴム送り装置付、右メス付 ■UF: 上送り付きミシン(上下差動送りミシン) ■S: シェルステッチテープ付けミシン(3種類のシェル幅を簡単に変わります) ■WX-8842-1: ポケット向布付け2本針下面飾り+1本針2重環補強縫いミシン ■L: 2本針ライン付ミシン
オプション ■UTC-A (UTC-E): エアー式上下糸切装置(もしくは、電気式上下糸切装置) ■UTC-AW (UTC-EW): エアー式下糸切装置+ワイパー(電気式下糸切装置+ワイパー) ■MC-30A (MC-30E): エアー式テープカッター(もしくは、ソレノイド式テープカッター) ■CS-1: 自動空環切装置

WX series of flatbed, high speed, high performance, with top and bottom coverstitch that have from 1 needle (model LX) to 4 needles (model WX-8803-1S), is possible to be applied for any type of fabric and operation like plain stitch, covering, attaching elastic lace, taping, attaching pocket facing, shell stitching plus tape binding, and so on. Stitch length can be adjusted by pushbutton easily (Max. about 4mm, 6 stitch/ inch). This series is most suitable for knit fabrics in order to produce uniform, flexible and beautiful stitch formation.

Subclass ■EMK: Elastic feeding device + front fabric cutter ■UF: Machine with Top(upper)feed dog(Top and bottom differential feed machine) ■S: Shell stitching plus tape binding(easy to change 3 kinds of shell size) ■WX-8842-1: Coverstitch machine for attaching pocket facings ■L: 2 Needle Attaching line tapes machine
Option ■UTC-A (UTC-E): Pneumatic-Automatic upper and lower thread trimmer (or electric type) ■UTC-AW (UTC-EW): Pneumatic-Automatic under thread trimmer (or electric type) + electric wiper ■MC-30A (MC-30E): Pneumatic type tape cutting device (or Electric type) ■CS-1: Automatic vacuum chain cutter

WX series maquina de cama plana, alta velocidad con recubridor arriba y abajo, desde una aguja, modelo LX hasta cuatro agujas, modelo (WX-8803-1S) es posible usarlo en cualquier clase de telas y operaciones, tales como puntada regular, recubrir - pegar cinta elastica, forros de bolcillo, puntada de concha y otras mas. El largo de puntada se regula facilmente aplicando presion al boton regulador (max: 4 mm, 6 puntadas por pulgada). Esta serie produce una puntada bonita y uniforme en telas de punto.

Subclass ■EMK: Alimentador de elastico y cortador al frente ■UF: con alimentador superior, y diferencial para alimentadores de arriba y abajo. ■S: Puntada de concha, unir cintas. Facil de cambiar para hacer 3 diferentes medidas de conchas ■WX-8842-1: Recubridora para aplicar forros de bolcillo
Opciones ■UTC-A (-E): Neumatico - automatico superior - inferior corta hilos (tipo electrico) ■UTC-AW (-EW): Neumatico - automatico inferior corta - hilo (tipo electrico) + deslizador electrico ■MC-30-A (-E): Tipo neumatico con aparato de corte (o tipo electrico) ■CS-1: Aspirador automatico y cortador

Serie WX de base plana, alta velocidade, alto desempenho, com ponto de costura superior e inferior que tem desde 1 agulha (modelo LX) ate 4 agulhas (modelo WX-8803-1S), podendo ser utilizada para qualquer tipo de tecido e operacao, como ponto simples, camisa, colocacao de elastico, revestimento, colocacao de bolso, ponto de camisa com anexacao de fita, e assim por diante. O comprimento do ponto pode ser facilmente ajustado pelo botao interruptor. (Max. cerca de 4mm, 6 pontos/polegada). Esta serie e mais apropriada para tecido de malha pois produz formacao de ponto uniforme, flexivel e bonita

Subclasse ■EMK: dispositivo alimentador de elastico + cortador de tecido frontal ■UF: maquina com grampo de alimentacao superior (maquina alimentadora diferencial superior e inferior). ■S: ponto de camisa com anexacao de fita (facil de mudar para 3 tipos de tamanho de camisa) ■WX-8842-1: maquina de ponto para prender bolsos ■L: maquina de fitas de linha para prender 2 agulhas
Opcao ■UTC-A (UTC-E): trimer de linha inferior e superior automatico-pneumatico (ou eletrico) ■UTC-AW(UTC-EPW): trimer de linha inferior automatico-pneumatico (ou eletrico) + limpador eletrico ■MC-30A(MC-30E): dispositivo de corte de fita do tipo pneumatico (ou eletrico) ■CS-1: cortador de corrente a vacuo automatico

WX・LX系列是平板型、高速、高性能两面绷缝的缝纫机。拥有从1针LX到4针的WX-8842-1, 缝制功能有一般装饰缝、滚领、花边松紧、滚条、裤袋的内衬布缝等广范围的系列缝纫机。
通过按钮式调节, 简易改变缝制线迹长度<最大4mm, 6针/1英寸>
安定的缝制, 美观的可伸缩的缝迹为针织最合适。
分型号 ■EMK: 上面送橡胶紧装置并带右切刀 ■UF: 带上送布牙缝制机<上・下带差动送布缝制机>
附属装置 ■UTC-A<UTC-E>: 气动式上、下切线装置<或电动式上、下切线>
■UTC-AW<UTC-EW>: 气动式下切线装置加上抓线装置<或电动式>
■MC-30A<MC-30E>: 气动式切条装置<或电动> ■CS-1: 自动切缝制线环装置



FRONT 4:1



FRONT 5:1



FRONT 6:1

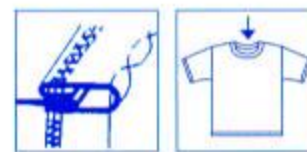


BACK

| MODEL | GAUGE |
|---------------------|-----------|
| WX-8803-1S | 7/32"-4mm |
| WX-8802-1S(8702-1S) | 3.5mm-4mm |

WX-8803-1S

(PAT・P)



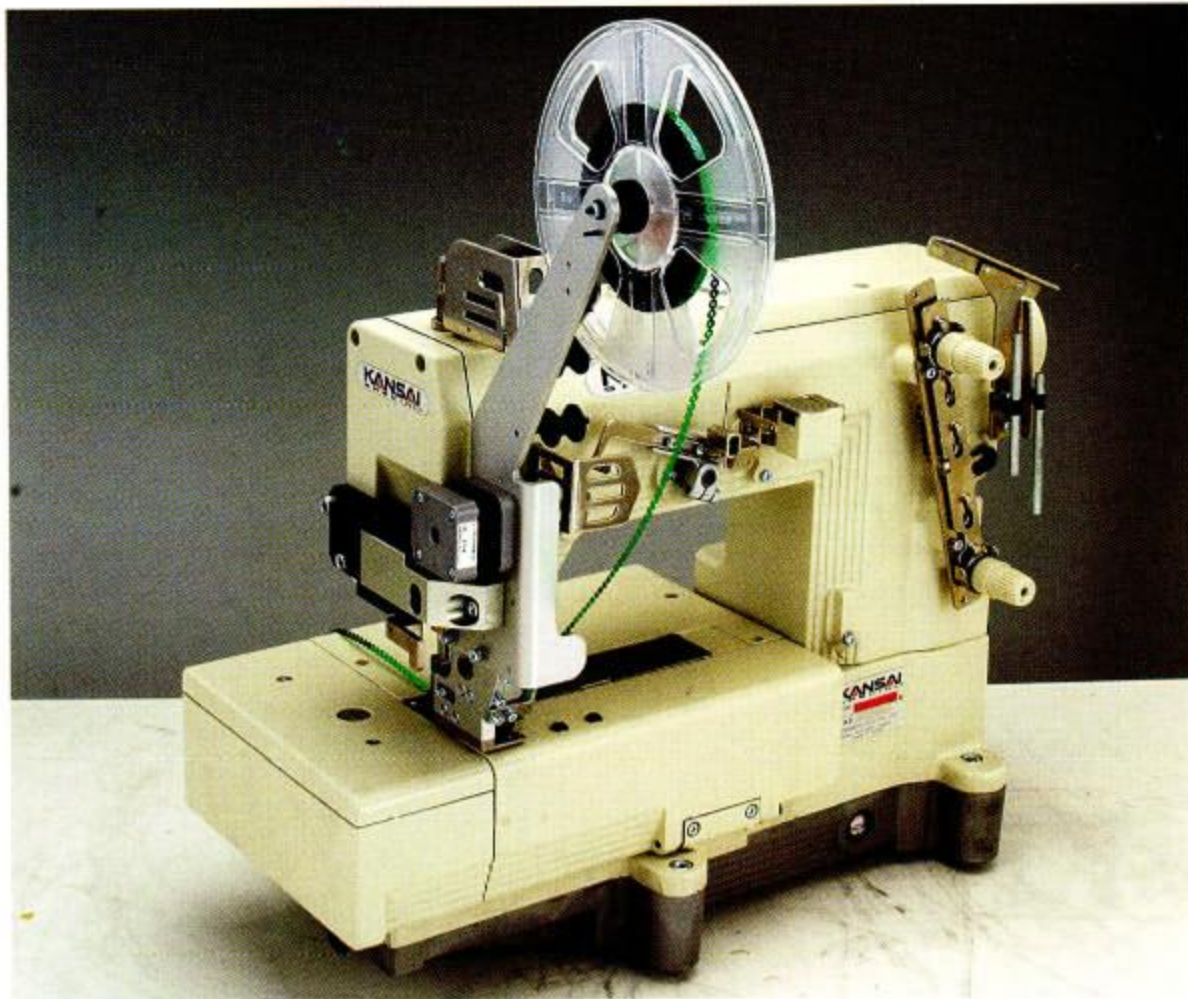
4本針両面飾り縫いシェルステッチテープ取りミシン(2~4本までの下記表のゲージの種類があります。)また、新モデルではシェルの幅を3段階で調節できます

4 needle, flatbed, top and bottom cover stitch machine for the shell (scallop) stitching with tape binding. 3 kinds of the shell (scallop) sizes such as small, medium and big are adjustable.

3 y 1 agujas, recubridor superior e inferior, 1 aguja con doble, cadeneta, formando puntada decorativa de conchitas

maquina de 4 agulhas com ponto superior e inferior para ponto de camisa com anexacao de fita. Conforme mencionado na lista abaixo, ha varios tipos de tamanho (2-4 agulhas). A largura da camisa pode ser ajustada facilmente (3 tipos de tamanho de camisa).

4针两面装饰线迹包边缝制机(有从2针到4针的各种针位请参考下表) 另外新机型的贝壳的幅宽度可以3段调节



LX-5801-SP

1本針二重環縫いスパンコール送り出し装置付ミシンシークインのピッチ(送り量)およびスキップ(1針毎から10針毎に1回のシークインのスキップ縫い間隔)はパルスモーター制御により操作パネルの設定で変更可能です。ガイドを換えることで3,5,7mmのサイズのスパンコールを使用できます。最高回転:1000rpm

1needle, flatbed, double chain stitch machine for attaching sequins by sequin device. Sequin size and skip timing (1 sequin every 1stitch to 10 stitches) can be changed by control box.. Three sizes of sequin 3, 5, and 7 mm are available by changing the optional guide and pressure foot.

1 aguja cama plana doble cadeneta, con aparato para pegar cequies en serie, con opciones de alimentacion (1 cequi cada puntada ao cada 10 puntadas)lo cual puede ser cambiado ajustando el panel de operacion. Las medidas de cequies son de 3, 5, y 7mm lo cual se ajusta desde la guia del dispositivo. Maxima velocidad es de 1000rpm.

1 agulha, base plana, maquina de ponto cadeia duplo para aplicacao de cequins decorativas atraves de um dispositivo pula pontos. O volume da alimentacao do dispositivo e a sincronia do pula ponto (A cada uma lantejola 1 ponto para 10 pontos) podem ser mudados atraves de uma operacao no painel. Tres tamanhos de lantejola podem ser usadas depois da troca da guia do dispositivo pula ponto as de 3, 5, e de 7 mm. Velocidade maxima: 1000 rpm

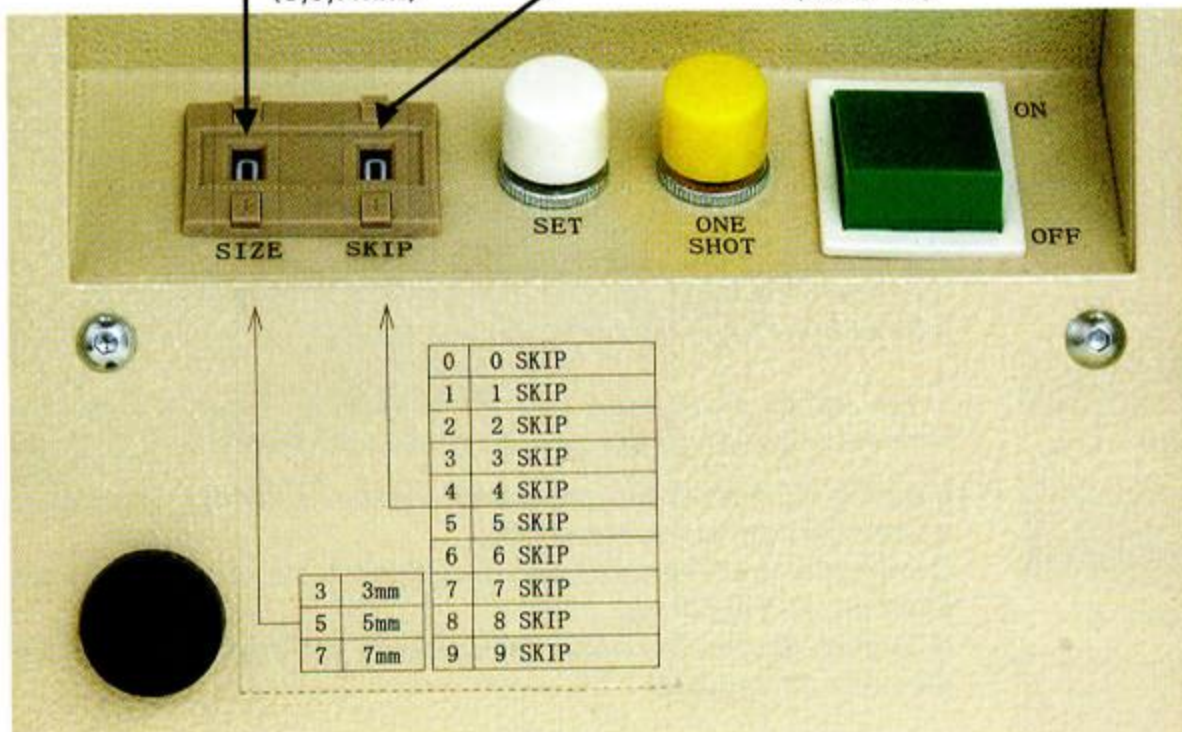
1针两重环缝, 带送装饰亮片用装置式缝纫机.通过电子操作控制箱的操作设定可以改变装饰亮片之间的缝制距离(装饰亮片之间的缝制距离从1针距到10针距之间的任何距离)

通过更换卡具可以缝3,5,7mm尺寸的装饰亮片
最高转速: 1000 rpm

■操作パネルによる簡単な操作 / Easy setting operation panel

スパンコールサイズ
The size of sequins
Tamano de sequins
Tamanho das cequins
装饰亮片的尺寸调节
(3,5,7mm)

スキップタイミング
Skip timing
Tiempo de salto
Sincronia do pulo do ponto
装饰亮片之间的缝制距离调节
(No.0~9)



スキップタイミング/Skip timing / Tiempo de salto / Sincronia do pula ponto / 缝制样片



No.0
連続付け
1 sequin every stitch
1 cequi cada puntada
1 enfeite a cada ponto
1针间距的缝制样片



No.1
2ステッチにつき1スパンコール
1 sequin every 2 stitches
1 cequi cada 2 puntadas
1 enfeite a cada 2 pontos
2针间距的缝制样片



No.2
3ステッチにつき1スパンコール
1 sequin every 3 stitches
1 cequi cada 3 puntadas
1 enfeite a cada 3 pontos
3针间距的缝制样片

PX SERIES

TECHNICAL DATA 仕様明細

| MODEL | No. of Needle | No. of Thread | Needle Type | | Gauge(Inch) | No. of Stitch (Stitch/Inch) | Diff Feed Ratio | Upper Feed Amount (mm) | | Presser Foot Lift (mm) | NeedleBar Stroke (mm) | Max Speed (rpm) |
|--------------------|---------------|---------------|-------------|-------------|-----------------|-----------------------------|-----------------|------------------------|---|------------------------|-----------------------|-----------------|
| | | | Organ | Schmetz | | | | ←→ | ↕ | | | |
| PX302-4W (DPW1302) | 2 | 4 | UOX163 11 | UYX163GAS75 | 2×5.55mm (総振り巾) | 0.9mm | 0.8~1.5 | | | 8 | 31 | 3500 |
| PX302-5W | 2 | 4 | UOX163 11 | UYX163GAS75 | 2×7.4mm (総振り巾) | 0.9mm | 0.8~1.5 | | | 8 | 31 | 3000 |

MMX SERIES

TECHNICAL DATA 仕様明細

| MODEL | No. of Needle | No. of Thread | Needle Type | | Gauge(Inch) | No. of Stitch (Stitch/Inch) | Diff Feed Ratio | Upper Feed Amount (mm) | | Presser Foot Lift (mm) | NeedleBar Stroke (mm) | Max Speed (rpm) |
|-----------|---------------|---------------|-----------------|-----------------|-------------|-----------------------------|-----------------|------------------------|---|------------------------|-----------------------|-----------------|
| | | | Organ | Schmetz | | | | ←→ | ↕ | | | |
| MMX-3303D | 3 | 7 | UYX128GAS 10~14 | UYX128GAS 70~90 | 7/32,1/4 | 8~16 | 0.7~2 | | | 6 | 31 | 3500 |
| MMX-3303F | 3 | 7 | UYX128GAS 10~14 | UYX128GAS 70~90 | 7/32,1/4 | 8~16 | 0.7~2 | | | 6 | 31 | 3000 |

MAC SERIES

TECHNICAL DATA 仕様明細

| MODEL | No. of Needle | No. of Thread | Needle Type | | Gauge(Inch) | No. of Stitch (Stitch/Inch) | Diff Feed Ratio | Upper Feed Amount (mm) | | Presser Foot Lift (mm) | NeedleBar Stroke (mm) | Max Speed (rpm) |
|---------|---------------|---------------|-------------|-------------|---------------|-----------------------------|-----------------|------------------------|---|------------------------|-----------------------|-----------------|
| | | | Organ | Schmetz | | | | ←→ | ↕ | | | |
| MAC-100 | 1 | 2 | UOX163 11 | UYX163GAS75 | 5.55mm (総振り巾) | | 0.8~1.5 | | | 8 | 31 | 2000 |

DFB・BX SERIES

TECHNICAL DATA 仕様明細

| MODEL | No. of Needle | No. of Thread | Needle Type | | Gauge(Inch) | No. of Stitch (Stitch/Inch) | Diff Feed Ratio | Upper Feed Amount (mm) | | Presser Foot Lift (mm) | NeedleBar Stroke (mm) | Max Speed (rpm) |
|--------------|---------------|---------------|------------------------|-----------|-------------------------------------|-----------------------------|-----------------|------------------------|---|------------------------|-----------------------|-----------------|
| | | | Organ | Schmetz | | | | ←→ | ↕ | | | |
| DFB1404PMD | 4 | 8 | UOX113 14 | UYX113 90 | 3/4,1,1-1/8,1-1/4,1-1/2,1/4-1/2-1/4 | 8~14 | | | | 10 | 34 | 4500 |
| DFB1412PSSM | 12 | 36 | DVX57 14 | DVX57 90 | 3/16,1/4 | 7~17 | | | | 6 | 34 | 2000 |
| DFB1412PTV | 12 | 24 | DVX57 12 | | 3/16,1/4 | 7~17 | | | | 10 | 34 | 3500 |
| DFB1403PSM-H | 3 | 9 | DVX57 18 | | 1/4 | 7~17 | | | | 6 | 34 | 2000 |
| BX1033PS-SM | 33 | 33 | DVX57LE 21 (DV-K25 21) | | 3/16 | 8~16 | | | | 6 | 34 | 2000 |
| BX1433PS-SM | 33 | 99 | DVX57LE 21 (DV-K25 21) | DVX57 90 | 3/16 | 7~17 | | | | 6 | 34 | 2000 |

WX・LX SERIES

TECHNICAL DATA 仕様明細

| MODEL | No. of Needle | No. of Thread | Needle Type | | Gauge(Inch) | No. of Stitch (Stitch/Inch) | Diff Feed Ratio | Upper Feed Amount (mm) | | Presser Foot Lift (mm) | NeedleBar Stroke (mm) | Max Speed (rpm) |
|-----------|---------------|---------------|-----------------|-----------------|-------------|-----------------------------|-----------------|------------------------|---|------------------------|-----------------------|-----------------|
| | | | Organ | Schmetz | | | | ←→ | ↕ | | | |
| WX8803-1S | 4 | 7 | UYX128GAS 10~14 | UYX128GAS 70~90 | 7/32×4mm | 8~16 | 0.7~2 | | | 6 | 31 | 4500 |
| LX5801-SP | 1 | 2 | UYX128GAS 12~14 | UYX128GAS 70~90 | | 7~16 | 0.7~2 | | | 8 | 31 | 1000 |

 **MORIMOTO MFG. CO., LTD.**

180, SUNA SHIJOHNAWATE-CITY, OSAKA 575-0001, JAPAN

TEL : +81-72-878-1221 FAX : +81-72-878-9649 E-MAIL : sales@kansai-special.com URL:www.kansai-special.com

FOREIGN AFFILIATED COMPANIES**KANSAI SPECIAL AMERICAN MACHINE CORP.**

1 MADISON ST. BLDG.F, EAST RUTHERFORD, N.J. 07073 U.S.A.

TEL : +1-973-470-8321 FAX : +1-973-470-8497 E-MAIL : sales@kansaispecial.net

MORIMOTO MFG. (HK) LTD.

UNIT B.D. 6/F., WING HONG CENTRE, 18 WING HONG STREET, LAI CHI KOK, KOWLOON, HONG KONG

TEL : +852-2391-8357 FAX : +852-2789-1707 E-MAIL : sales@kansaispecial.com.hk

KANSAI SPECIAL EUROPE GMBH

QUIRINSTR. 17, 40545 DUSSELDORF, GERMANY

TEL : +49-211-577-9090 FAX : +49-211-558-1477 E-MAIL : Contact@kansai-special.de

MORIMOTO SINGAPORE PTE LTD.

33, MIDDLE ROAD #05-01 P H BUILDING SINGAPOLE 188942

TEL : +65-6334-1305 FAX : +65-6334-1365 E-MAIL : info@kansaispecial.com.sg

MORIMOTO BANGLADESH LIAISON OFFICE

3rd. FLOOR, K.K. BHABAN, 69/K, GREEN ROAD, PANTAPATH, DHAKA-1205.

TEL : +880-2-8610255 FAX : +880-2-8610263 E-MAIL : info@kansaispecial.com.sg

KANSAI (SHANGHAI) INDUSTRIAL SEWING MACHINE CO., LTD.

NO.55 LANE835, JIAXIN ROAD, MALU TOWN, JIADING DISTRICT, SHANGHAI 201818

TEL: +86-21-5990-1798 FAX: +86-21-5990-1538 E-MAIL: kansaish@spe.sina.net